
A Weekly Update
For The Employees of
North Central Health Care



NEWS YOU CAN USE



WEEKLY CONNECTION WITH MICHAEL LOY

Point of Access

When we talk about Point of Access here at NCHC it can mean several things. Most often we are referring to: 1.) our website; 2.) how people call into our locations; and 3.) how individuals access and navigate our buildings. Currently, there are efforts to improve Point of Access occurring in a number of ways. We are getting set to publicly announce the launch of our brand new website. We had a soft launch last week and are working on fine tuning the site now. You can view the new site from any device at www.norcen.org. We are implementing a new switchboard program with a live call attendant for all calls coming into NCHC. We are also reducing the

number of entrances in our campus renovations coming next year. These efforts are all intended to make it easier to understand and access our programs and services.

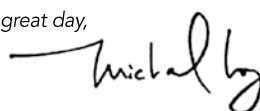
Another opportunity to improve the ways in which people access our programs and services presented itself last year when we integrated Outpatient and Community Treatment. We brought all of our front office operations under the direction of our Outpatient Operations Manager. As we went through this process we gained valuable insight into opportunities for improvement. With the recent vacancy of the Outpatient Operations Manager, we were presented with the opportunity to review the position and workflow that is overseen by that position.

To further our efforts to build a seamless and efficient continuum of care, we made the decision to create a new program focused on patient access by reorganizing current resources. It was recognized that there can be duplication of efforts and lack of consistency between registration specialists, referral coordinators and enrollment. This is no fault of the individuals working in these roles, but as an organization, we haven't set up our internal process to foster collaboration to the degree it is needed. This is true across the entire organization.

To address these opportunities to create a better experience, a new position has been created – Patient Access Director. This position will replace the prior Outpatient Operations Manager position. The position will be posted on our website soon, so we can begin the hiring process and implementation of improvements related to patient access. Registration Specialists, Outpatient Referral Coordinators, certain program Clerical staff, Enrollment Services Specialists, and Prior Authorization Specialists will come together to form the new cross-organization program called Patient Access Services. Employees who will be a part of these new

efforts have already been notified. Of further importance, this program will provide services in all three of our counties. It is anticipated that improvements to workflow and process changes will occur over the next year. Staff will be asked for input and will be part of the process improvement as we move closer to full implementation. Our goal is to improve the consistency in the collection of critical information, reduce the volume and variability in forms used to collect information and to reduce the number of times we ask patients for the same information. We believe these efforts, taken together with many others, will lead to better outcomes and experience.

Make it a great day,



Appreciation Event	2
Walk to End Alzheimer's	
United Way Give-Away ...	3
Win a New Car!!	
Community Treatment Fundraiser	4
Community Events	6
Adopt-A-Resident or Client	8
100 Names Need a Match	
Meet Our New Employees!	9

ADMINISTRATOR ON-CALL x4488 or 715.848.4488

In the event of Phone System Outage,
reference the O:drive "On-Call Information Folder"
for Schedule and Cell Phone #'s.

**Monday, Nov. 12 –
Sunday, Nov. 18**

Laura Scudiere



Person-Centered
Shout

out

Jackie Eckes, Housekeeping

Why: Jackie helped me get extra vacuuming done and washed a few windows for me!

Submitted By:
Donna Schultz





<https://youtu.be/JdyjDcV0yWE>



PHOTO OF THE WEEK

Submit A Great Photo From Your Week!

Submit your photo and description to: Email: jmeadows@norcen.org or Text: 715.370.1547. Please indicate Photo of the Week and include your name, who/what/where of the photo and why you are submitting. **Please remember!** To protect the privacy of our patients, clients and residents, photos are not to be taken of any of those we serve without written permission.

NOVEMBER IS NATIONAL ALZHEIMER'S DISEASE AWARENESS MONTH

Alzheimer's disease is a degenerative brain disease and the most common cause of dementia. Dementia is a syndrome — a group of symptoms — that has a number of causes. The characteristic symptoms of dementia are difficulties with memory, language, problem-solving and other cognitive skills that affect a person's ability to perform everyday activities. North Central Health Care in Wausau provides round the clock care for over 100 individuals diagnosed with dementia or Alzheimer's who live at Mount View Care Center. The Legacies by the Lake Dementia Care program is regarded as a leader in dementia care in the State of WI for their care, support and training of caregivers specifically in the field of dementia care.

Each year, in Central WI and over 600 communities nationwide, the Walk to the End Alzheimer's takes place to raise money for local Alzheimer's support, awareness, research, prevention and ultimately a cure. Thank you to all those who supported our Walk to End Alzheimer's Campaign at North Central Health Care in 2018. Our team was able to raise over \$9,098 because of you and was recognized by the Alzheimer's Association of Wausau as the Highest Fundraising Team of this year's Walk to End Alzheimer's. Jennifer Dixon of NCHC was also recognized as the highest individual fund raiser! Thank you all for your support and efforts to End Alzheimer's.

Check out the Appreciation Video and presentation by the Alzheimer's Association of Wausau: <https://youtu.be/JdyjDcV0yWE>

Our Butterfly Mural will be dedicated on Wednesday November, 14th at Marathon County Court House where the mural will be displayed for several months. The dedication will take place from 2 pm thru 2:30 pm outside of the Branch 1 and 2 Court rooms.

We would like to take this opportunity to invite you to come along and participate in this dedication to those who lost the battle, those that are still in the fight and to those in recovery. This is a ever-changing mural and butterflies can be added at any time.

Thank you all for taking the time and giving your love. The mural is a beautiful display of everyone's individuality, those it memorializes and the individuals that painted it.

ZEROSuicide
IN HEALTH AND BEHAVIORAL HEALTH CARE

HAVE YOU COMPLETED THE ZEROSUICIDE WORKFORCE SURVEY ASSIGNED IN HEALTHSTREAM YET?

All employees have been assigned a HealthStream module that includes the link to the ZERO Suicide Workforce Survey. Thank you for your participation. As a reminder, you have until November 26, 2018 to log into HealthStream and complete your survey. Your feedback is very important. To thank you for your time and commitment to the Zero Suicide Initiative, there will be a drawing for prizes from all those who complete the survey. The sooner you complete the survey, the more entries you receive into the drawing to win one of ten \$20 Gift Cards.

Complete your survey before:

Sunday, Nov. 4 – receive 4 entries to win
Sunday, Nov. 11 – receive 2 entries to win
Sunday, Nov. 26 – receive 1 entry to win

Thank you in advance for your time and commitment to this very important initiative. If you have any questions, contact, Jennifer Peaslee at 715.848.4507.



UNITED WE WIN

Make a donation of at least \$1 per week (\$52+ per year) during United Way of Marathon County's 2018 Campaign and you will automatically be entered to win the 2017 Fiat!

With your generous gift, YOU COULD WIN TOO!



New donations and previous gifts increased by \$13 earn DOUBLE!				
GIFT	\$52	\$78	\$104	
ENTRIES	2	4	6	

Continue with the same gift as the previous year for standard entries.				
GIFT	\$52	\$78	\$104	
ENTRIES	1	2	3	

SWEEPSTAKES ENTRIES MUST BE RECEIVED BY 5PM ON DECEMBER 7, 2018



705 S. 24th Ave • Ste 400B
Wausau, WI 54401
715-848-2927
www.UnitedWayMC.org



WE CAN'T WIN THE FIGHT WITHOUT YOU
PLEASE GIVE GENEROUSLY



THANK YOU TO OUR
GENEROUS SPONSORS:



Thank You for Your Generosity!

Check Your NCHC email for your personal link to participate!

Campaign Ends December 7 at 5:00 PM!

NCHC PRIVACY OFFICER ANNOUNCEMENT

Jennifer Peaslee,
Interim Privacy Officer

Protecting the privacy and rights of our patients, clients and residents is one of our top priorities within our commitment to Person-Centered Service at NCHC. Since early 2017, Carol Rich has served as NCHC's



Privacy Officer. We thank Carol for her commitment to privacy initiatives and for serving our organization in this manner. We wish Carol the best on her future endeavors as she embarks on a new path in her career within our community.

As we seek a member of our NCHC organization to fulfill this role, Jennifer Peaslee, Quality and Clinical Transformation Director, will be serving as NCHC's Interim Privacy Officer.

Employees are required to contact a Privacy



2018 WORKPLACE GIVING CAMPAIGN

Please consider a pledge through payroll deduction to United Way. Every gift makes a difference. By giving to United Way, you provide funding to tackle issues in your community - issues very closely aligned to North Central Health Care's mission and values. No one company or program can fully address the issues facing our community without United Way's support - the strength is in collaboration. Together, we can do so much more to make a positive difference.

Your contribution will be invested in programs and services that meet the most pressing needs in our local community. YOU can make a difference. **A gift of \$52 or more annually qualifies you for the Fiat Sweepstakes.** Over the last 4 years, NCHC has had at least one employee qualify as a finalist to win the car. Last year, Darla Plaster of Mount View Care Center drove away with the keys to a new car!

Any Donation in the Workplace Giving Campaign Qualifies You to WIN Prizes!

As an extra thank you for your participation, any gift to United Way through our 2018 Workplace Giving Campaign will qualify you to win one of 4 additional prizes from North Central Health Care:

- **A Deluxe Hotel Getaway Package**
- **8-hours of PLT (2 winners)**
- **Milwaukee Admirals Hockey Tickets with Gas Cards!**

A drawing will be held with our NCHC finalists in December and the winner announced at the Chili Lunch on the Wausau Campus on Wednesday, December 12 at Noon.

If you have a current payroll deduction pledge, it will automatically rollover at the end of the month and begin new deductions in January.

Officer for potential violations such as:

- **Privacy**
- **Rights**
- **Ethical Boundaries**
- **or for questions related to HIPAA**

For concerns or questions, employees may contact: **Jennifer Peaslee, NCHC Interim Privacy Officer, 715.848.4507**

Thank you for your commitment to all those we serve! If you have questions, please contact Jennifer at the number above.



COMMUNITY TREATMENT YOUTH FUND RAISER

The Community Treatment Lincoln and Langlade Youth Team is doing our annual candle fund raiser again this year! We have 11 amazing scents this year!! If you are interested in sniffing some they will be in the Community Treatment area in Wausau (Friday afternoon) or Lincoln/Langlade youth staff have samples to share as well. We will be wrapping up our sale on Wednesday, Nov. 14. Thank you!

8oz tin (\$10) • 16oz tin (\$16) • 3pkts of melts (\$15) • 16oz jar (\$16) • 26oz jar (\$20) • Gift Set: Includes air freshener, 2 oz tin and melt (\$10)

\$5 dollars from each candle and 3 packs of melts sold and \$3 from each gift sets sold goes back to Community Treatment to support the youth in our communities.

Cashmere Woods Type – Base notes of bergamot and orange flower, middle notes of lily of the valley and jasmine, warm top notes of patchouli, amber, sandalwood and musk.

Christmas Wreath - No holiday home would be complete without the scent of Christmas Wreath, a vibrant, green, herbal based aroma with crisp pine and spruce top notes.

Cranberry Marmalade - Luscious blend of tart cranberries spiced apples and fresh California orange peel. This fragrance oil is infused with natural essential oils, including Cinnamon, Clove and Orange.

Day At The Spa - Day at the Spa is a calming and balanced fragrance oil that combines notes of lemongrass and black currant with hints of patchouli and sugarcane. It's a great year-round fragrance that fits well in an aromatherapy line. This fragrance oil is infused with natural lemongrass, patchouli,

and lime essential oils.

Eucalyptus Spearmint – The strong, pungent scent of eucalyptus is like no other scent in the world, but close to a true menthol with a sharp, clean burst of mint to awaken the senses. Frosty and bright.

Grandma's Kitchen –The aroma of rich, creamy vanilla with a touch of fresh ground cinnamon sticks. Every whiff of crust, nuts, sugar and spices, bubbling hot fruit, still lingers in our Grandma's kitchen!

Harvest Spice – Harvest Spice Fragrance Oil Our new Fall Harvest spice is a unique blend of clove, nutmeg, Cinnamon with a hint of musk and fresh apple.

Reindeer Poo - This fragrance will lift your holiday spirits, and add a little magic to your life! Reindeer Poo begins with top notes of apples and pears;

followed by middle notes of eucalyptus, pine, and geranium; and well-balanced with base notes of vanilla, cedarwood, and patchouli

Spruce & Berries –Fresh fragrant spruce trees entwined with the luscious aroma of raspberries and notes of cedar, pine needles and tangy orange.

Sugar Cookie - Mom just pulled another baking sheet out of the oven – can you smell those sugary cookies and the creamy vanilla frosting?

Vanilla Hazelnut - A mouthwatering blend of toasted hazelnuts and creamy vanilla.

Order forms are available in any Community Treatment office. Or contact Haley Ellenbecker at 715.470.0742.



GO BADGERS! Team Experiences

The BHS Leadership Team ventured to Madison for a little team bonding and Badger Football! Looks like fun!

Shown in the photo are Kim Moore, Trina Sorce, Liz Parizo, Kathi Buckli, and Dan Shine.

Want to share a fun team experience? Submit your photo and description to jmeadows@nrcen.org



North Central Health Care
Person centered. Outcome focused.

FALL BAKE SALE!

WEDNESDAY, NOVEMBER 14th



8:00AM UNTIL GONE.

LOCATION: POOL LOBBY






North Central Health Care
Person centered. Outcome focused.

October 2018
Employee of the Month
★★★★★
BECKY KOPP
Community Treatment

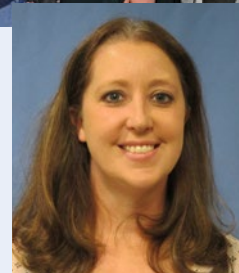
Congratulations to Becky Kopp of Community Treatment for being recognized as the October Employee of the Month at NCHC. Becky consistently and collaboratively builds positive relationships both internally and externally. She communicates honestly, respectfully and purposefully with all partners to help enrich the lives of the consumers we serve. We think the comments left by Becky's team and clients say it best:

"Becky is a joy for everyone to work with. She is flexible with a positive approach to change and offers creative ideas on a daily basis. Her attitude is infectious and many on her team benefit from her optimistic points of view."

"As a Referral Coordinator, Becky has an extremely fast paced and demanding position that brings with it a lot of pressure from teammates, consumers, families, agency and community partners. Becky manages to remain calm, respectful, and present with a smile in all of her interactions."

"I have the pleasure of sharing an office with Becky. Because of this, I witness day after day the tireless effort that Becky puts into each work day. I am in constant awe of her work ethic and drive. She is "non-stop" all day, every day. Becky has been in the role of Referral Coordinator for about six months. Those six months has been a time of extraordinary growth and change within Community Treatment. Becky has handled an increase in workload coupled with new procedures and processes with ease and a positive attitude. She is known throughout NCHC as someone who is true to their word and someone who can be counted on to get the job done. Her professional judgment is trusted and respected within NCHC and throughout the community. Becky truly demonstrates NCHC's Vision of Lives Enriched and Fulfilled. I am blessed to have her as a co-worker and to call her a friend."

Congratulations Becky!



A client left this comment on Becky's nomination:

"I like Becky a lot. Becky has been really awesome. She gets it – she understands mental health. She is quick with responding and always finds the time to help support me. She is easy to talk to and makes me feel comfortable. When I'm with her I feel safe."



"NCHC BABIES" STAR IN UNITED WAY VIDEO

When a family is out of food, they go to a food pantry. But where do they turn when they run out of diapers or formula – two high-cost, high-need items?

Bundles of Joy distributes diapers and infant formula via area organizations who serve struggling families in Marathon County. Bundles of Joy volunteers sort a shipment of diapers. The volunteer-run Gift-Wrapping Station at the Wausau Center Mall is one fundraising part of this project. Hundreds of volunteers graciously donate their time wrapping gifts from Black Friday through Christmas Eve and shoppers can donate to fund the Bundles of Joy project for the entire year. This annual fund raiser offers a fun and festive opportunity to volunteer for



a local cause, knowing your efforts provide essential items for babies and toddlers right here in our local community. Sign up to volunteer for gift wrapping at the Wausau Center Mall, with shifts from December 1 – December 24. More info at <https://bit.ly/2qCvL5Z>

Check out our NCHC Babies who starred in this United Way Video: <https://youtu.be/Os8XeEkaUAM>



BIG TOBACCO

TURNED INTO BIG VAPE

THURSDAY, DECEMBER 13

North Central Health Care Theater
1100 Lake View Drive Wausau, WI 54403 - Directions [HERE](#)

**Get the Facts About Vaping
and Resources Available to
Address this Teen Epidemic**
For questions contact: Jenna.Flynn@co.marathon.wi.us

FREE EVENT

Choose from 3
Presentation Times to
Suit Your Schedule

SELECT ONE

7:30AM - 8:30AM
11:30AM - 12:30PM
4:00PM - 5:00PM

RSVP HERE
or by calling
715-261-1931

Who Should Attend?
parents, teachers, youth
advocates, health care
providers, counselors,
school administration, law
enforcement, public health



**Tobacco Free
Coalition**
of Central Wisconsin
Marathon-Portage-Wood

LONELINESS AND SOCIAL ISOLATION IN OLDER ADULTS

Jean Ostrowski, RN is a Health and Wellness Coordinator with Inclusa, Inc. and is completing her B.S. in Nursing at UW - Stevens Point. As part of her Capstone project, she is working with United Way RSVP and medical students of Medical College of Wisconsin to promote the health of older adults in the greater Wausau area community. Jean has researched and developed a presentation which addresses the issue of Loneliness and Social Isolation among older adults along with some proactive measures that can be taken.



JOIN THE CONVERSATION

Learn about the issues of loneliness and social isolation, the health benefits of social engagement, and proactive steps that individuals and agencies serving older adult can do to help with this issue.

November 15, 2018 10:00 am to 11:30 am

Aging & Disability Resource Center of Central WI
2600 Stewart Avenue, Wausau

Presented by Partnership for Healthy Aging and part of the Building Momentum series, designed to inspire and engage community members around healthy aging in Marathon County. For more information, please contact Amanda.Ostrowski@co.marathon.wi.us.



Empower, Not Enable

Addiction impacts the community on so many levels. One group that is often overlooked are the loved ones who are supporting those with addictions - including families, friends, neighbors and co-workers. It's a difficult line between empowering vs enabling, and this session will help you raise up those that are struggling for long term sobriety and reduce the co-dependency that may result.

Thursday, November 29th from 6:30pm-8:30pm

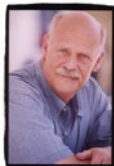
Location:
DC Everest Middle School Auditorium (9302 Schofield Avenue, Schofield)

Pre-Registration:
Requested, but not required <https://empowernotenablejvv.eventbrite.com>

Cost: FREE event

Sponsored by:
Aspirus Health Foundation & the AOD Partnership

Speaker bio - Jeff Jeff VanVonderen is a highly sought after speaker and consultant both nationally and internationally. For over 35 years, individuals, families, and organizations have benefited from his skills and understanding in the areas of addiction, family systems, and recovery. Jeff is one of the featured interventionists on the A&E Network's Emmy-winning documentary series *Intervention*. Jeff has authored various books, articles and journals, as well as been a guest on television and radio programs.



Want to hear more from Jeff?

Helping in the Helping Professions with Jeff VanVonderen

Equipping professionals in the community with the tools they need to not only help others who are struggling with mental health and addictions, but to also help themselves through self-care and mindfulness.

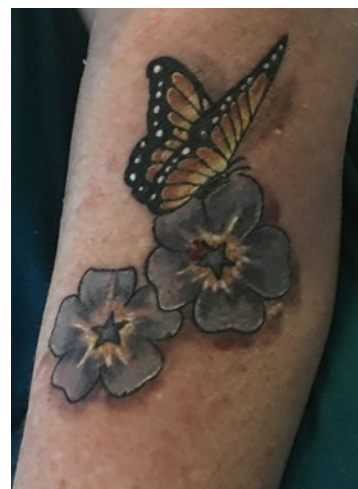
Friday, November 30th from 8:30am-3:30pm

Northcentral Technical College Conference Center
(1000 W. Campus Drive-Health Sciences Building, Wausau)

For more information, visit:
<https://www.mtc.edu/calendar/2018/11/30/helping-helping-professions-jeff-vanvonderen>



www.aodpartnership.org
for more information



IT'S A MOUNT VIEW THING! Residents Share Their Tattoos

With the blessing of their doctor, two of our nursing home residents made arrangements to get tattooed this week! They proudly show them off and wanted to share with our team here!



Save a Life!



No one plans to be a victim, no one plans to witness tragedy, but anyone can be a *hero*

Why do I need this training?

Bombings. Home injuries. Motor vehicle crashes. Mass shootings. Hunting or boating accidents. Emergencies can happen.

What will I learn?

Learn basic techniques to control bleeding using hands, dressings, and tourniquets.

When:

December 6, 2018 - 6pm-7pm

December 19, 2018 - 12pm-1pm
(lunch will be provided for this class only)

Location:

Aspirus Wausau Hospital
Medallion Room

Open to the general public.

Pre-register by calling the Customer Contact Center at 715.847.2380 or online at www.aspirus.org/stopthebleed

Course is \$5.00 for the general public and free for Aspirus employees
(Must provide employee ID number)

Registration closes Monday, the week of the course.

Be prepared!

TTC-046-09/18



Click [here](http://marathoncounty.crimestoppersweb.com/crimeoftheweek.aspx) for this week's Crime of the Week.

<http://marathoncounty.crimestoppersweb.com/crimeoftheweek.aspx>

SUPPORT OUR LOCAL SCHOOLS PERFORMING ARTS

Several employees at NCHC in Wausau have kids participating in the local performance of Mamma Mia! at the D.C. Everest Senior High Theater in November. Support our families and grab a ticket for a good show! Best of luck to our students in your performance!

With Respect and Gratitude

On November 11, 2018

We Honor Our Veterans
Thank You for Your Service and Sacrifice



From all of us at

North Central
Health Care

Person centered. Outcome focused.



Our Service members and Veterans of the United States Armed Forces have helped us to maintain liberties through their tireless patriotism, loyalty, and selfless sacrifice for our great Nation. Please reach out and thank a Veteran today and every day.

With Veterans Day falling on Sunday, please join us on Monday, November 12 at 10:00 am for a Veteran's Day Program at Mount View Care Center in the 2nd Floor Dining Room.

D.C. Everest Performing Arts Presents:

MAMMA MIA!

NOVEMBER 2018

9th – 11th and 15th – 18th

D.C. Everest Senior High Theater

TICKETS ON SALE NOW!!

www.showtix4u.com

Or Purchase at DC Everest Senior High Main Office M-F 7:30-3:00



**Do You Know of Experienced, Qualified and Reliable Candidates for the following positions:
CNA, Dietary Aide or Residential Caregiver?**

Here's your chance to earn

You could earn the following REFERRAL BONUS...

When your recruit joins the NCHC Team and after you have both met the referral requirements.*

CNA	\$1000
Dietary Aide (0.3 FTE)	\$200
Residential Caregiver**	\$500

How to Apply? TEXT "Refer" to 715.598.3663 or complete the referral form located in HR and the MVCC Administration Office. Submit to Human Resources at the time your recruit applies for employment at North Central Health Care.

***Referral requirements:** Half of payment is disbursed after 6 months and the remainder after 1 year. You and your recruit must be in good standing throughout this period.
What does that mean? No written warnings for attendance or other performance issues.

****\$1500 Sign-On Bonus for Residential Caregiver New Hires.**

See Human Resources for details.

**Hurry! This Great Referral Bonus Period
Expires December 31, 2018.**

North Central Health Care offers equal opportunity in employment and in service delivery.

HRinsights

Position Postings

Title: Phlebotomist <https://bit.ly/2SGCyZl>

Status: Limited Part-time

Location: Mount View Care Center - Wausau

Under general supervision, performs the manual and technical tasks involved with the proper collection, labeling, processing and distribution of biological specimens for laboratory testing to include microbiological, hematological and chemical analysis, from clients, residents and patients of all ages. This person is responsible for utilizing relevant computer programs, performing data entry, canceling and crediting tests, and accurately distributing the results.



Do You Know of A Qualified Candidate?
Refer and earn a \$500 Referral BONUS!!
Text "Refer" to 715.598.3663

HOLIDAY GIFT LIST FOR RESIDENTS AND CLIENTS

100 Names Still Need to Be Adopted!

Volunteer Services has completed their Christmas list and have over 100 names of clients and residents that still are in need of being adopted. If you would be interested in adopting a client or resident this Holiday season, please reach out to the Volunteer Office at x4450 or volunteer@norcen.org. Thank you for helping us to fulfill and enrich lives this Holiday season.

Thank You in Advance for Your Generosity





WELCOME THESE NEW EMPLOYEES TO THE TEAM!



From left to right:

Hlee Yang, CNA, Legacies by the Lake - Lakeview Heights
Racquel Erickson, Laundry Worker, Laundry
Ashley Wedow, CNA, Northwinds Vent
Lisa Borth, Hospitality Assistant, Legacies by the Lake - Lakeview Heights
Markita Smith, Behavioral Health Tech, Crisis
Stephanie Endres, CNA, Northwinds Vent
Cheryl Greni, Cook, Food Services
Judy Weinhandl, Switchboard Operator, Marketing & Communications
Jessica Serfontein, Financial Services, Benefit Counselor Patient Accounts

Megan Mohr, Hospitality Assistant, Legacies by the Lake - Gardenside Crossing
Todd Shnowske, Project Manager, IMS
Sarah Levit, Dietary Aide, Food Services
Melissa List, CNA, Legacies by the Lake - Lakeview Heights
Kayla Olszewski, Residential Care Assistant, Residential – Jelenik Road Apt
Danielle Behrens, MH/Substance Abuse Therapist, Outpatient
Marvin "MJ" Imig, Dietary Aide, Food Services




CIT TRAINING CONTINUES ON THE WAUSAU CAMPUS

Local Law Enforcement Learn About Crisis Intervention

Led by several employees on our NCHC team, Crisis Intervention Training continued for local law enforcement on the Wausau Campus and at NTC this week. We are proud to be able to be a part of educating, training and providing better avenues of communication between all in our community! Photo courtesy of Bob Wilcox, NCHC Law Enforcement Liaison.






The Neighbors' Place
"people helping people"

THE 11TH ANNUAL

EMPTY BOWLS

AN EVENT TO FIGHT HUNGER
IN NORTH CENTRAL WISCONSIN

**SATURDAY,
NOVEMBER 17, 2018**
11 AM – 2 PM
WAUSAU WEST


Silent Auction – Soup To Go
Live Music

TICKETS:

ALL AGES: \$12 (meal and bowl)
AGES 6-12: \$5 (meal only)
5 & UNDER: FREE (meal only)

www.neighborsplace.org
715-845-1966

Presented by:

 **Ascension**



**Raffle Tickets are available in the Marathon County Health Dept
or contact Eileen at x1902.**

Empty Bowls Raffles

\$10 per ticket

#1 18k White Gold Diamond Pendant
Necklace on an 18k White Gold Chain
DONATED BY
JIM KRYSHAK JEWELERS
Diamonds Fine Jewelry



Valued at \$1,100

#2 4 Packers / Cardinals Tickets
and Tailgate Package
December 2, 2018
DONATED BY
Stew and Tracy Effen & Kevin and Louise Wolf



Valued at \$700

#3 Sony 4K
55" Flat Screen TV
DONATED BY
Tony and Jenny Sweeney



Valued at \$650

See me to purchase your raffle tickets!

Tickets also available at The Neighbors' Place:
745 Scott Street, Wausau

Need not be present to win.



Mike Brundidge, Angela Parker-Jensen, Dana Best,
Jennifer Gruna shown packaging the dough.



Laura Harder joins the efforts and helps with containers.

NCHC UNITED WAY MONSTER COOKIE SALE SUCCESS

Thank You For Your Support!

The NCHC United Way Team scooped up a successful Monster Cookie Dough Sale this week. The team hand scooped close to 200 containers of Monster Cookie Dough for our hungry supporters. Proceeds from the sale will benefit our local United Way for initiatives like Food Pantry support and Bundles of Joy, supplying diapers and formula to parents in need.

Thank you for your support. The NCHC United Way Team would like to thank all those in Food Services who helped prepare dough and assist with our final sale. We couldn't do it without them! Thank you!

And thank you to the United Way Team members who volunteered their time to this great cause!





WHAT'S 4 LUNCH?

WAUSAU CAMPUS CAFETERIA

Cafeteria Hours: Open 7am – 5:30 pm

A Cashier is on duty from 9:00am – 10:00am, 10:30am – 1:30pm.
When a cashier is off duty, an honor system is used for food purchases.

**Serving Soup, Salad and
Lunch Entrée Option
Monday – Friday.**

All hot sandwiches,
hot foods and cold bar items
are \$.35/ounce.

Soup: \$1.25 Cup / \$2.00 Bowl



NOVEMBER 12 – 16, 2018

MON 11/12 ... Cream of Broccoli Soup

Chicken & Mashed Potatoes

Spaghetti Sauce & Linguine

Wax beans

Garlic Bread

Peach Fruit Salad

TUES 11/13.... Beef Noodle Soup

Grilled Ham & Swiss

Country Crisp Chicken

Yams

Creamy Cole Slaw

Chocolate Chip Cookie

WED 11/14Hobo Soup

Homemade Pizzas

BBQ Pork Chop

Creamy Hashbrowns

Green Beans

Dutch Apple Crumble

THURS 11/15. Chicken Vegetable Soup

Nachos Supreme

Beef Tips & Gravy

Egg Noodles

Wisconsin Blend Veggies

Pumpkin Bar w/Cream Cheese Frosting

FRI 11/16.....Chili Soup

Hamburger on a Bun
with Fried Onions

Ring Bologna

Fried Potatoes

Baked Beans

Chocolate Swirl Cake

HOLIDAY PIES AND BREADS AVAILABLE IN WAUSAU CAMPUS CAFETERIA

**First Come, First Served! Get Your
Holiday Treat Starting Next Week!**

Beginning November 14 Food Services will be offering baked pies and breads for the holidays, Thanksgiving to Christmas, from 9am-1:30pm. They will be available on a first come, first served basis. The selection will vary day to day. Items and prices are as follows:

Holiday Breads Individually wrapped, 24 oz. loaf for \$8.00 each

- Pumpkin Walnut Bread w/Amaretto Glaze
- Lemon Poppy seed Bread w/Lemon Glaze
- Cranberry Walnut w/Granola Crunch

Fresh Baked Pies 8" Pies in Bakery Boxes

- Pumpkin...\$5
- Old-Fashion Apple...\$6
- Dutch Apple...\$6



Marathon County
Employees Credit Union

**Need Some Extra "Dough"
this Holiday Season?
Make Sure to Check Out
Our Holiday Loan Special!**



4.95% APR*
\$20,001 and above

5.95% APR*
\$10,001 - \$20,000

6.45% APR*
\$5,001 - \$10,000

6.95% APR*
\$5,000 and below

*Promotion valid from 11/01/2018 until 01/15/2019. * Annual Percentage Rates (APRs) accurate as of 11/01/18. APRs are available for borrowers with credit scores of 680 and above, and ONLY for new money borrowed from Marathon County Employees Credit Union. Scores under 680, please add 1% to the rates. Loans under \$1000 have a maximum term of 24 months. Loans of \$1,001 to \$20,000 have a maximum term of 36 months. Loans over \$20,000 have a maximum term of 48 months. All loans are subject to MCECU'S normal credit requirements.

Contact us today!

Apply online at www.mcecu.org

715 261-7685 • culoans@co.marathon.wi.us

400 East Thomas Street Wausau, WI 54403