

Eye Protection Requirements

Effective October 26, 2021



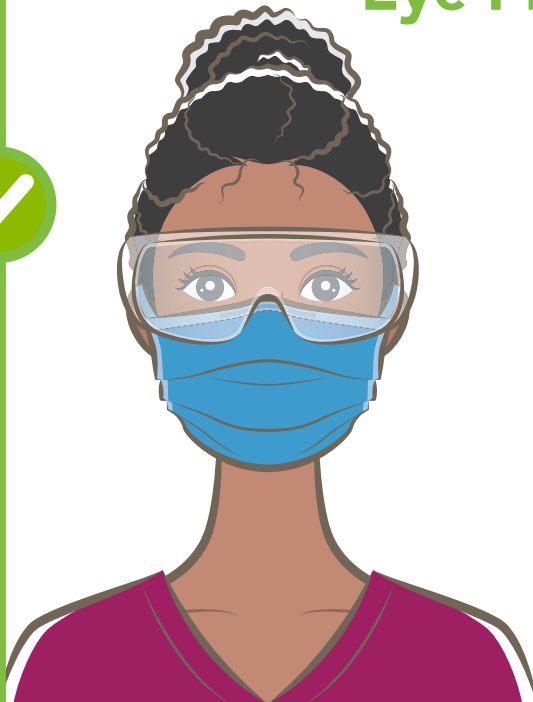
North Central
Health Care

Person centered. Outcome focused.

Eye protection requirements have recently been updated by WI Department of Health Services. If you work in direct care programs and eye protection is a requirement due the nature of work you are performing, only the following eye protection is considered acceptable:



Approved Eye Protection



Goggles or Safety Glasses:
Can be worn over
corrective glasses



Face Shields:
Must Wrap Around Sides
of Head

NOT Acceptable Eye Protection

Snap-on Side Shields



Slide-on Side Shields



Stay Informed with the Latest Information and FAQ's.
www.norcen.org/ForEmployees

