

**April 7, 2023**

Flash Fridays will be distributed weekly on Fridays to prepare you for upcoming surveys like The Joint Commission or State of WI surveys. The Continual Readiness information provided will pertain to all areas within NCHC, from Behavioral Health to Skilled Nursing Care, however some information may be more specific to one survey. Some may only pertain to clinical staff, but always read it thoroughly. If you have questions, ask your Team Leader to explain how the topic relates to your program or department.

THE JOINT COMMISSION IS COMING SOON! SURVEY WINDOW: FEB. 5, 2023 – AUG. 5, 2024

HAND HYGIENE

The Joint Commission will now issue a citation to healthcare organizations if during on-site visits surveyors witness an employee fail to follow correct hand hygiene guidelines. This is intended to improve healthcare workers' compliance with proper hand washing. Poor hand hygiene of healthcare employees is considered a major contributor to hospital-acquired infections. About 722,000 hospital-acquired infections occurred in the U.S. in 2011 and about 75,000 people died with such an infection during their inpatient stay, according to the Centers for Disease Control and Prevention.

INFECTION CONTROL & PREVENTION

As part of our Culture of Safety, employees, patients, residents, clients and family members are a critical part at NCHC in preventing infections. As an employee, you play an important role in preventing infections and keeping all you care for at work and at home safe.

CLEANING YOUR HANDS IS THE #1 WAY TO PREVENT INFECTION

Additional ways to break the chain of infection include, using standard precautions and transmission-based isolation techniques, vaccinations, covering your cough and staying home when you are ill. Take time to stop infections in their tracks by adhering to the infection prevention policies.

When To Perform Hand Hygiene

- Before touching a patient
- Before clean/aseptic procedure
- After body fluid exposure risk
- After touching a patient
- After touching patient surroundings
- After removing any PPE
- Before and after eating

When To Use Soap and Water

- When a resident/patient is on Contact Plus Precautions (C. diff, Norovirus)
- When hands are visibly soiled with biological contaminants, food, etc.
- After using the bathroom

When To Use Hand Sanitizer

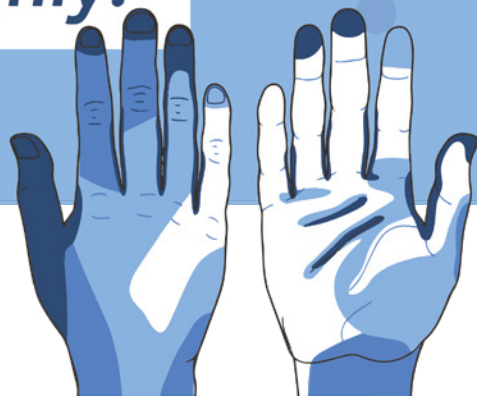
- Use in all other circumstances requiring hand hygiene (listed in when to perform Hand Hygiene above)

Prevent common infection prevention mistakes!

Wash your hands thoroughly!

Areas most often
missed during
handwashing

- Most often missed
- Often missed
- Less often missed



Direct-Care Staff Reminder Fingernails should be less than 1/4 inch. No artificial nails permitted for any direct care staff or any staff who handle linen, supplies, food, etc.

Questions? Contact your manager or team leader and ask them about your role in the survey process.