

# NEWS YOU CAN USE



## WEEKLY CONNECTION WITH MICHAEL LOY

### Thank A Resident

National Thank A Resident Day was celebrated on February 26th. Our team put together a nice recognition for our Central Wisconsin Psychiatry Residents outside of the Resident's Lounge that you can find a picture of in this edition of the NYCUC. Residency is a cornerstone of graduate medical training where Physicians hone their skills in their chosen specialty of medicine. Following medical school, an individual interested in Psychiatry as a specialty will embark on at least a 4-year training program. Each year is categorized as a Post-Graduate Year (PGY-). A first year Resident would be considered a PGY-1. Residency offers in-depth exposure and gives medical learners the opportunity to train under the supervision of experienced faculty.

Over 6 years ago we made an agreement with the Medical College of Wisconsin to bring the Central Wisconsin Psychiatry Residency to life. It's hard to believe that we will be graduating our first year of Residents this summer as they complete their training. We actually had one of our first class of Residents graduate early as Dr. Zimany moved into more advanced training as part of a Child and Adolescent Fellowship in Milwaukee. A Residency takes a lot of support to run. Our Founding Program Director Dr. Ed Krall laid the pathway, and now Dr. Rob Gouthro is taking the Residency forward as the new Program Director. I'm also very appreciative of all of our faculty and staff that support the program. We've learned a lot about graduate medical education in the last several years but it has been such important development in our organization. Our program gets better with each year and we continue to have high interest with new applicants.

It is the Residents who make the Residency. We've had a great experience with hard working and caring Residents along the way. I've greatly enjoyed getting to know them and watching them grow personally and professionally. We are very fortunate to have them part of our team here. This year I want to give a special appreciation for our first class of Residents which includes Dr. Amy Butterworth, Dr. Ryan Stever, and Dr. Albina Zimany. I think of this group in the same light as Louis and Clark, cutting a path West where others hadn't ventured. They took a risk and lead the way for hopefully generations to come. As the first class, each year they experienced the first of firsts with each new rotation. Your efforts will impact the lives of so many. I wish them only the very best in the future as we appreciate the work they've done for North Central Health Care and the Medical College of Wisconsin's Central Wisconsin Residency Program. Thank you!

Four years ago, we had a Psychiatrist gap in our three counties of over 10 full-time Psychiatrists. In building our program we've closed that gap significantly. This doesn't include the impact that having the eleven current Residents practicing in our community every day. We expect our work thus far to only be the foundation for a very strong program in the future, and ultimately ensuring our community has the Psychiatric resources it needs. When you see a Resident, please be sure to thank them for coming to our program and community.

Make it a great day,

**Meet Our Psychiatry Resident Physicians** ..... **2**  
Thank A Resident Day

**Covid-19 Status Report** ..... **3**  
Staff Cases & Operations

**Retirement News** ..... **5**

**Flash Friday** ..... **6**  
National Patient Safety Goals

**Meet Our New Employees** ..... **8**  
Welcome to the Team

### ADMINISTRATOR ON-CALL x4488 or 715.848.4488

In the event of Phone System Outage, reference the O:drive "On-Call Information Folder" for Schedule and Cell Phone #'s.

**Monday, March 1 –  
Sunday, March 7**

**Dr. Robert  
Gouthro**



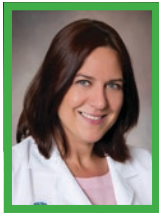
Person-Centered  
**Shout  
out**

**Christine  
Laurent, HIM**

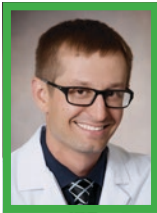
**Why:** Thank you for your kindness, patience and communication as I continue to learn (and make mistakes).

**Submitted By:**  
**Claire Udell**





Amy Butterworth, MD



Ryan Stever, MD



Shweta Karve, MD



Tsarina Van Wieren, DO



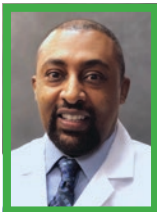
Christian Ryser, DO



Brittney Harding, MD



Luba Kats, DO



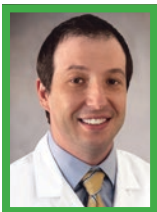
Kirubel Woldemichael, MD



Joshua Shupe, MD



Ania Fida, MD



Boris Berman, MD

## PHOTO OF THE WEEK



Thank A Resident Day - Submitted by Communications & Marketing

## THANK A RESIDENT DAY

Today we celebrate our Psychiatry Residency physicians on "Thank a Resident Day"! As a participating member of the Central Wisconsin Psychiatry Residency Program, North Central Health Care works closely with the Medical College of Wisconsin to train Resident Physicians. Three candidates are accepted into the program each summer.

The Resident Physicians at North Central Health Care are physicians who have completed medical school and are gaining additional training in a field of Psychiatry. The ACGME accredited program was an initiative of the Medical College of Wisconsin to develop medical resources in underserved areas of the state of Wisconsin.

We thank all of our residents for their skills and expertise and hope you have a wonderful #ThankaResidentDay.

You can learn more about our residents and program at <https://www.norcen.org/about-us/about-nchc/psychiatry-residency-program/>

### Submit A Great Photo From Your Week!

Submit your photo and description to [jmeadows@norcen.org](mailto:jmeadows@norcen.org) or Text: 715.370.1547. Please indicate Photo of the Week and include your name, who/what/where of the photo and why you are submitting.



Psychiatry Residents with Linda Cotton, MCW (far left) and Dr. Robert Gouthro, Chief Medical Officer, NCHC (far right).





## Wear a Mask – Maintain Social Distance – Wash Your Hands Stay Home If You Are Sick – Report Symptoms to Employee Health and Manager

*Cases reported below are current active employee cases. All employee cases previously reported that are no longer shown below have been cleared to return to work from NCHC Employee Health and local health officials based on a review of the individual case details.*

### PPE GUIDELINES

**Visitors:** Cloth face covering or surgical masks required. Visitors will be screened using the COVID Screener (Version 3).

**Employees:** Face coverings required while entering the building. Self-screening required using temperature kiosks procedures. Surgical masks at a minimum required while within all NCHC buildings. Staff may remove masks while working alone in private offices.

#### Employees Working in Direct Patient/Resident Care:

Each patient/resident care area will be designated as being in Standard or Enhanced Precautions. Units on Enhanced Precautions must have it clearly posted on the entrance to the unit.

- o *COVID Standard Precautions* – Surgical Mask, Gloves and Eye Protection (Face shield, goggles or safety glasses) required.
- o *Enhanced Precautions* – N95 Mask, Eye Protection (Face shield, goggles or safety glasses), Gloves and Gown during patient encounters required.

### NCHC COVID-19 WEEKLY STATUS REPORT

#### Confidential Employee Report

**Employee Cases Reported through February 25, 2021**

Program	Current Active Employee Cases	Date Reported
---------	-------------------------------	---------------

#### New Cases

**\*\*\* No New Employee Cases Reported this week! \*\*\***

#### Previously Reported

*All previously reported cases in employees have been cleared to return to work.*

<b>Total Active Employee Cases</b>	<b>0</b>
------------------------------------	----------

Program Hours and Operations Online:  
[www.norcen.org/Covid-19](http://www.norcen.org/Covid-19)

### COVID-19 PAID SICK LEAVE UPDATE: EFFECTIVE 1/1/21

Emergency Paid Sick Leave (Coronavirus) Policy #205-1140 provisions ended December 31, 2020. Currently, there is no legislation that supports extending those provisions into 2021. Staff will continue to screen appropriately, report symptoms and not report to work if experiencing any signs of illness. As a result of no supporting legislation, staff will be required to use PLT or take unpaid leave.

### GENERAL OPERATIONAL STATUS GUIDELINES:

- Virtual visits and treatment whenever possible.
- Essential visitors and contractors only – compassionate care visits may be approved by a Program Director. Volunteer programming remains suspended.
- In-person meetings are allowed only if each of the participants can maintain appropriate social distance or if there is a physical barrier between individuals.
- Group sizes for meetings or treatment must be limited to 10 or less. On-site interviews and Orientation are allowed with an option for virtual participation provided.
- Current Remote Work guidelines remain. Please work with Manager and Human Resources.
- Program admissions, closures, opening of COVID units, and staff re-deployments will be determined by Incident Command daily. Updates provided to staff at least weekly.

### PROGRAM-SPECIFIC OPERATIONAL STATUS UPDATES:

**MVCC** – Units on Enhanced Precautions – None. Accepting admissions. No Patio Visits allowed. Scheduled Window, Virtual and Compassionate Care Visits Allowed.

**Pine Crest** – Units on Enhanced Precautions – None. Accepting admissions. No Outdoor Visits allowed. Scheduled Window, Virtual and Compassionate Care Visits Allowed.

**BHS Adult Hospital** - Open and operational. No visitation allowed.

**BHS Enhanced Precautions Unit** – Closed.

**BHS Youth Hospital** - Open and operational.

**Crisis Center** - Open and operational.

**Crisis CBRF** - Open and operational. No visitation allowed.

**Adult Day Services – Wausau** – Open and operational.

**Adult Day Services – Antigo** – Open and operational.

**Prevocational Services – Wausau** - Open and operational.

**Adult Day/Prevocational Services – Merrill** – Open and operational.

**Residential Services** – Open and operational. No visitation allowed.

**Lakeside Recovery** – Closed. No Admissions.

**Outpatient Clinics** - Open and operational. TeleHealth appts. as much as possible. No in-person groups.

**Community Treatment** - Open and operational. TeleHealth interactions as much as possible.

**Aquatic Therapy Center** – Open and operational.

**Adult Protective Services** - Open and operational.

**Clubhouse** - Open and operational.

**Hope House** - Open and operational.

**McClellan House** - Open and operational.

**Pharmacy** - Open and operational.




**Transportation** - Open and operational for medical, grocery and employment appt transportation for elderly and developmentally disabled.

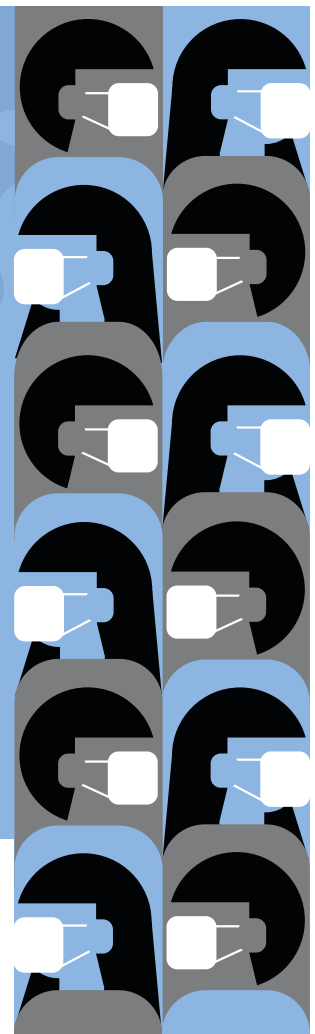
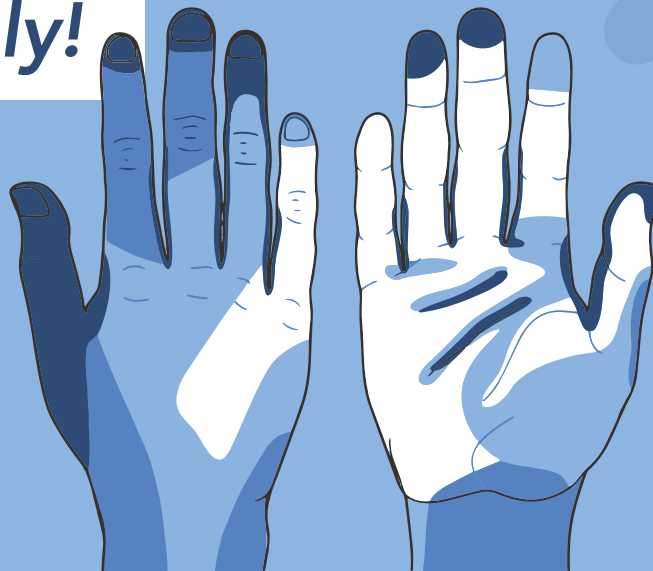


Prevent common infection prevention mistakes!

# Wash your hands thoroughly!

Areas most often  
missed during  
handwashing

-  Most often missed
-  Often missed
-  Less often missed



North Central Health Care  
Person centered. Outcome focused.



NCHC CORE VALUE

## Partnership

We are successful by building positive relationships  
in working towards a system of seamless care as  
a trusted community and county partner.





## RETIREMENT NEWS

Congrats Cheryl Roets

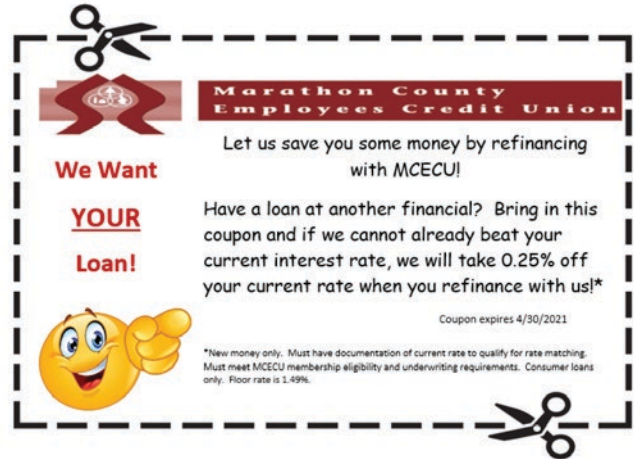


**Cheryl Roets, RN** at Pine Crest has announced her retirement from NCHC on 4/2/2021. Cheryl has worked at Pine Crest for 25 years. Thank you so much for your service Cheryl!



**Marathon County  
Employees Credit Union**

**LET US SAVE YOU SOME MONEY!**



**See MCECU for all your financial needs!**  
**We are here to serve you and your family.**

[www.mcecu.org](http://www.mcecu.org)

400 East Thomas Street • Wausau, WI 54403

## Identity Theft: Protect & Prevent

Join us for a virtual presentation on identity theft!  
**Tuesday, March 16th, 2:00-3:00pm**



**Presenter:**  
**Jeff Kersten, Agency Liaison**  
*The Bureau of Consumer  
Protection, Wisconsin  
Department of Agriculture,  
Trade and Consumer*

Join us and learn about identify theft—from what it is and how it happens to learning how to spot it, how to protect yourself and steps to take if you are a victim. Helpful resources will be shared during the presentation.

### To Register:

Call the Aging & Disability Resource Center-CW  
at 1-888-486-9545



A collaboration between  
Aging & Disability Resource Center-CW and  
Wisconsin Department of Agriculture, Trade  
and Consumer Protection



WeCOPE is an evidence-based program that helps adults cope with life stress. WeCOPE has been shown to reduce stress and depression, increase positive affect, and improve health behaviors in randomized trials.

Managing life's challenges in healthy ways allows participants to take better care of themselves and others.

This 7-week program meets via Zoom once a week for 1 hour. An additional 6 practice hours will be expected.

**Prevent provider  
fatigue and burnout  
by taking care of  
YOU!**

**Two sessions are available:**

- ❖ Tues 6-7PM, March 9<sup>th</sup> -April 20<sup>th</sup>
- ❖ Wed noon-1PM, March 10<sup>th</sup> – April 21<sup>st</sup>

Register at:  
<http://bit.ly/WeCOPE4P>  
or email: [jenniferpark@wisc.edu](mailto:jenniferpark@wisc.edu)





## Continual Readiness

February 26, 2021

Flash Fridays will be distributed weekly on Fridays to prepare you for upcoming surveys like The Joint Commission or State of WI surveys. The Continual Readiness information provided will pertain to all areas within NCHC, from Behavioral Health to Skilled Nursing Care, however some information may be more specific to one survey. Some may only pertain to clinical staff, but always read it thoroughly. If you have questions, ask your Team Leader to explain how the topic relates to your area.

## NATIONAL PATIENT SAFETY GOALS FOR 2021!

The Joint Commission survey is an unannounced accreditation survey. Surveyors will be conducting individual and system tracers while rounding in different areas. **ALL employees** should be prepared to be asked about:

- How you care for clients
- Policies
- Procedures
- Fire safety
- Infection prevention
- Emergency management
- **National Patient Safety Goals**

### But What Are the National Patient Safety Goals?

The purpose of the National Patient Safety Goals is to improve patient safety. The goals focus on problems in health care safety and how to solve them.

## IDENTIFY INDIVIDUALS SERVED CORRECTLY

Use at least two ways to identify individuals served. For example, use the individual's name and date of birth. This is done to make sure that each individual gets the correct medicine and treatment.

## USE MEDICINES SAFELY

Record and pass along correct information about an individual's medicines. Find out what medicines the individual is taking. Compare those medicines to new medicines given to the individual. Make sure the person knows which medicines to take when they are at home. Tell the individual it is important to bring their up-to-date list of medicines every time they visit a doctor.

## PREVENT INFECTION

Use the hand cleaning guidelines from the Centers for Disease Control and Prevention or the World Health Organization. Set goals for improving hand cleaning. Use the goals to improve hand cleaning.

## IDENTIFY PATIENT SAFETY RISKS AND REDUCE THE RISK FOR SUICIDE

Find out which patients are most at risk for suicide in order to protect these at risk individuals.

## IMPROVE STAFF COMMUNICATION

Ensure critical test results are reported on a timely basis to the right staff person.

## USE CLINICAL ALARM SYSTEMS SAFELY

Make improvements to ensure that alarms on medical equipment or calls are heard and responded to on time.

**Questions?** Contact your team leader, any member of the Leadership Team or Survey Readiness Team.







# HRinsights

## Position Posting

**Title:** Certified Medical Assistant

**Status:** Full Time **Location:** Outpatient Services, Wausau

**To apply or learn more:** <https://bit.ly/3q5ID28>

The Certified Medical Assistant in Outpatient Services, Wausau will perform general, clinical, and administrative skills as certified medical assistant to nursing and psychiatry staff in an outpatient setting.

### Required:

- Current certification as a CMA/RMA through AAMA
- Current BLS (CPR) Certification

### Preferred:

- One to three years' experience

## Refer A Friend or Colleague!

**Text "Refer" to 715.598.3663**

**Referring Someone for a Job is As Simple As Sending a Text!**

## Here's your chance to earn

**You could earn the following REFERRAL BONUS...**

When your recruit joins the NCHC Team and after you have both met the referral requirements.\*



## HEALTH PLAN UPDATES

### \$0 Drug List

To the right you will find the updated \$0 Drug List for the HSA Mid and HSA High Plans for 2021. This replaces the previous page 21 in the YOU Benefit Guide and is effective immediately.

If you have any questions, please do not hesitate to ask: Lynn Wengelski, Compensation & Benefits Analyst, [LWengelski@norcen.org](mailto:LWengelski@norcen.org), 715-848-4438.



**NEWS, UPDATES, LINKS,  
STORIES, PHOTOS,  
VIDEOS!**

**GET SOCIAL!**  
**#IamNCHC**

## \$0 Drug Lists - HSA Mid & HSA High Plan Only

Navitus will work with you to transition to other formulary alternatives that are available at \$0. By switching to these formulary alternatives, it is much cheaper to overall Plan costs!

### ANTIASTHMATIC & BRONCHODILATOR AGENTS

Advair Diskus Advair HFA Inhaler Arnuity Ellipta Inhaler	Asmanex HFA Inhaler Asmanix Inhaler Breo Ellipta Inhaler	Budesonide INH SUSP Dulera Inhaler Flovent Diskus Inhaler	Flovent HFA Inhaler
--	--	---	---------------------

### ANTIDEPRESSANTS

Citalopram Soln Citalopram Tab Escitalopram Soln	Escitalopram Tab Fluoxetine Cap Fluoxetine Soln	Fluoxetine Tab Paroxetine Tab Sertraline Conc	Sertraline Tab
--	---	---	----------------

### ANTI-DIABETICS

Bydureon Bcise Auto INJ Bydureon INJ Bydureon Pen INJ Fiasp Flextouch INJ Fiasp INJ Fiasp Penfill INJ Glimperide Tab Glipizide ER Tab Glipizide Tab Glipizide/Metformin Tab Glyburide Micronized Tab Glyburide Tab	Glyburide/Metformin Tab Humulin R INJ U-500 Humulin R U-500 Kwikpen INJ Insulin Aspart Flexpen INJ Insulin Aspart INJ Insulin Aspart Mix Flexpen INJ Insulin Aspart Mix INJ Insulin Aspart Penfill INJ Lantus INJ Lantus Solostar INJ Levemir Flextouch INJ Levemir Inj	Metformin ER Tab Metformin Tab Novolin 70/30 Flexpen INJ Novolin INJ Novolin N Flexpen INJ Novolin R Flexpen INJ Novolog Flexpen INJ Novolog INJ Novolog Mix Flexpen INJ Novolog MIX INJ Novolog Penfill INJ Ozempic INJ	Pioglitazone tab Rybelsus Tab Tolazamide Tab Tolbutamide Tab Toujeo Max Solostar INJ Toujeo Solostar INJ Tresiba Flextouch INJ Tresiba INJ Trulicity INJ Victoza INJ
---	--	---	---

### ANTIHYPERLIPIDEMICS

Atorvastatin Tab 10mg Atorvastatin Tab 20mg Atorvastatin Tab 40mg	Atorvastatin Tab 80mg Lovastatin Tab Pravastatin Tab	Rosuvastatin Tab 10mg Rosuvastatin Tab 20mg Rosuvastatin Tab 40mg	Rosuvastatin Tab 5mg Simvastatin Tab
---	--	---	---

### ANTIHYPERTENSIVES

Amlodipine/Benazepril Cap Atenolol/Chlorthalidone Tab Benazepril Tab Benazepril/Hydrochlorothiazide Tab Bisoprolol/Hydrochlorothiazide Tab Captopril Tab Captopril/Hydrochlorothiazide Tab	Enalapril Tab Enalapril/Hydrochlorothiazide Tab Fosinopril Tab Fosinopril/Hydrochlorothiazide Tab Lisinopril Tab Lisinopril/Hydrochlorothiazide Tab Metoprolol/Hydrochlorothiazide Tab	Moexipril Moexipril/Hydrochlorothiazide Tab Propranolol/Hydrochlorothiazide Tab Quinapril Tab Quinapril/Hydrochlorothiazide Tab Ramipril Cap Trandolapril Tab
--	--	---

### BETA BLOCKERS

Atenolol Tab Betaxolol Tab Bisoprolol Tab	Carvedilol Tab Labetalol Tab Metoprolol ER	Metoprolol Tab Nadolol Tab Pindolol Tab	Propranolol ER Cap Propranolol SOLN propranolol Tab
---	--	---	---

### ENDOCRINE AND METABOLIC AGENTS - MISC.

Alendronate Tab	Alendronate tab 40MG
-----------------	----------------------

### NOTE

Under the HSA MID and HSA HIGH PLANS, these drugs are covered at \$0/first dollar (as preventive) in addition to the drugs listed on the Aspirus Health Plan \$0 list.

Azathioprine *Blood Glucose Test Strips Furosemide Haloperidol	Hydralazine Irbesartan Letrozole Tab Olmesartan	Prazosin HCL Quetiapine Risperidone Torsemide Tab	Ventolin HFA  *Only available at NCHC Pharmacy at \$0 cost
---	--	--	--





## WELCOME THESE NEW EMPLOYEES TO THE TEAM!

These employees were welcomed at Orientation on February 22, 2021

### Community Treatment Youth



**Cole Ringer** –  
Case Manager

### Crisis Services



**Amanda Flatter** –  
Crisis Tech

### Mount View



**Debra Welch** –  
Respiratory Therapist

### Outpatient Psychiatry



**Heidi Heise** –  
Nurse Practitioner



### Patient Access Services



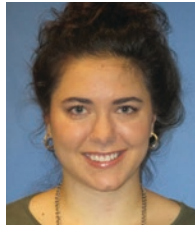
**Stacy Jagler** –  
Prior Authorization  
Rep

### Youth Crisis Stabilization



**Weslie Perez** –  
Registration Specialist

### Youth Hospital



**Elise Thuot** – Youth  
Care Professional



**Melissa LaPorte** –  
Registered Nurse



## Star of the Month

### CONGRATULATIONS DEEDE GRUND!



Congratulations to Deede Grund, the March Pine Crest Star. Deede was nominated and voted almost unanimously for always going above and beyond. She skips her breaks every PM to help pass food, visit with residents, and clean up in special care. She has a strong work ethic, loves the residents, and is such a positive person. She just makes you feel good!







## OUTSTANDING TEAM PARTNERSHIP AWARD

### Pine Crest Covid Unit Team

Congratulations to the Pine Crest Covid Unit Team, recipient of NCHC's Outstanding Team Partnership Award. The team was nominated by a member of the team who felt that the teamwork and dedication of the entire team shined during this pandemic. Your great work does not go unnoticed!



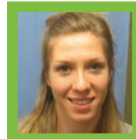
Angela Schultz



Bette Lloyd



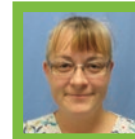
Sara Belz



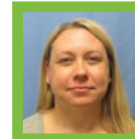
Amanda Steinfest



Janeane Klaver



Tanya Kimble



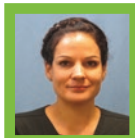
Shannon Butler



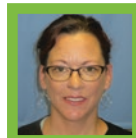
Cassie Smith



Cheryl Roets



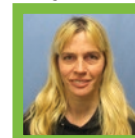
Melissa Winterfeldt



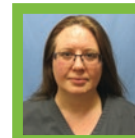
Sheri Sczygelski



Peter Lewandowski



Dawn Kayhart



Rebekka Surber

"This team had a large amount of stress put on them, caring for residents who were very sick. They worked with minimal help and equipment, often for long hours. They never questioned anyone's job on the unit. With little preparation, their job was done without complaint. Very resourceful and able to come together as a team. This group deserves all the praise you can give them. A great team to work with!"

Also nominated for this award was the HIM Chart Retention Team, Community Corner Clubhouse Team and Adult Behavioral Health Hospital.



## OUTSTANDING SERVICE EXCELLENCE AWARD

### Marie Santos Godleske Pine Crest, Food Services

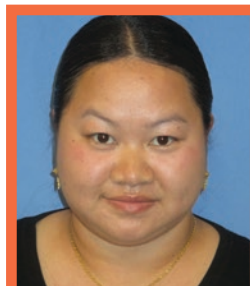
Congratulations to Marie Santo Godleske of Pine Crest Food Services recipient of the NCHC's Outstanding Service Excellence Award. Nominated by Pine Crest Appreciation Committee, Marie is well deserving of the honor.

"Especially throughout this pandemic, Marie is like sunshine on a cloudy day! She is always positive, friendly, energetic and has a great sense of humor. She is a joy to work with and works hard. She goes out of her way to do special things for staff and residents (i.e. garnishing their plates for anniversaries or birthdays)."

"Her positivity has been needed and much appreciated amongst staff and residents."

"She has brought her homemade eggs rolls for staff a few times and has worked with Life Enrichment to coordinate special things."

Jill Nelson in Business Operations was also nominated for this award.



## OUTSTANDING PERSON-CENTERED SERVICE AWARD

### Paia Yang, Clubhouse

Congratulations to Paia Yang of Clubhouse, recipient of the NCHC's Outstanding Person-Centered Service Award. Nominated by a member of her team who feels Paia passionate, compassionate, dedicated, caring, empathetic, and kind.

"Paia always brings the energy to Clubhouse. Whether it's a good or a bad day, Paia engages with members equally. Paia is passionate, compassionate, dedicated, caring, empathetic, and kind. She truly enjoys her job and it shows every day. Even during the pandemic, as Clubhouse Employment Specialist, she was able to secure employment for members."

"Paia is a model employee following and believing in the Core Values of the organization. We have a small team and through the pandemic and all our challenges. She can be counted on to bring her best to the clubhouse. Everyone who works with her is impressed by her drive, spirit, and dedication to our members."

"Paia attains 15 Member Experience Surveys a month and it shows in our Patient Experience Score percentage - 93.6% of members find our service at Clubhouse to be Excellent."

Other employees who were nominated for this award include Kelly Alfson - Adult Day Services, Megan Arrowood - MVCC - Northern Reflections, Beverly Bailey - MVCC - Northern Reflections, Erika Koch - Adult Day Services, Brittany Kuehn - Behavioral Health Services, Betty Lloyd - Pine Crest - Long Term Care, Angela Schultz - Pine Crest - Long Term Care, Amanda Steinfest - Pine Crest - Post Acute Care, Amy Stiver - Pine Crest - Post Acute Care and Laurie Wegner - Pine Crest - Long Term Care.

**Nominate a Coworker or Team today! [www.norcen.org/Recognition](http://www.norcen.org/Recognition)**



## WAUSAU CAMPUS CAFÉ

NEW ITEMS  
AVAILABLE EACH WEEKGrab-N-Go  
Menu

NEW HOURS!

Monday – Friday | 10:30 AM – 5:30PM or Until Sold Out

## Self-Serve and Ready to Eat!

All menu items are pre-made in our kitchen and individually packaged for you to grab and go!  
Sandwiches and soups are cold and ready to heat at your convenience. No hot foods will be available.

## Limited Quantities

Food will be available in limited quantities each day and will not be restocked. When it is sold out, it's sold out.

## Self-Check Out

Employees are required to pay with Quick Charge or Credit Card. No cash exchanged. Employees will follow a self check out style purchase by using a touch pad kiosk and swipe badge or credit card to complete transaction. No meal tickets accepted.

## Safety Precautions

Hand sanitizer required before entering and after using self-check out stand.  
Only 3 people allowed in food selection area at a time to maintain social distancing requirements. Masks required at all times.  
No eating in Cafeteria. Please Grab and GO! Beginning November 30, crossing Zones will be allowed to access Café.

Parfaits  
Nuts  
String Cheese  
Greek Yogurt  
Cookies

Assorted Bakery  
Homemade Soup  
Tuesday –Friday Only  
(Packaged and  
Ready to Reheat)

Assorted Cold  
Sandwiches  
Assorted Wraps  
Milk, Juice, Coffee,  
Bottled Water, Tea



Click on the **quickcharge**® icon  
on any NCHC Network Computer  
desktop and enroll online today!

NCHC Employees, to start using **quickcharge**®,  
you **must** enroll online.

Your username and password are the same  
as your network login information.

**ARE YOU CHECKING OUT PROPERLY WHEN YOU PAY IN THE WAUSAU CAMPUS CAFÉ?**  
**You May Be Paying for Someone Else's Food! Oops!**

We have received feedback from staff that when they tap the screen to begin their self-check out process, items are still on the screen from the prior employee. This means that employees are leaving without paying for these food items and are not finishing the purchase! Ooops!

1. Please make sure you are double checking you have paid for your purchases and completed the transaction.  
Follow ALL the steps on sign at the kiosk.
2. Before you start checking out, looks to see if there are any items in the cart. You may be paying for someone else's items if they did not check out properly.