



A Weekly Update
For The Employees of
North Central Health Care



Lakeside Recovery, 28-day medically monitored residential program, is now fully open. Adult residents of Lincoln, Langlade and Marathon counties can now contact us to have their name placed on our referral list, if they are interested in this program. 715-848-4483

NEWS YOU CAN USE



WEEKLY CONNECTION WITH KURT GIBBS

Dear North Central Health Care Center Team,

I trust this message finds you well and thriving. As the Chairman of the North Central Health Care Center Board of Directors, I am honored to express my heartfelt gratitude to each one of you for your unwavering dedication over the past few years.

Reflecting on the remarkable journey we've undertaken together, it fills me with immense pride to witness the nearing completion of the entire renovation of our campus facilities. The expansion and enhancement of services to

the residents of the three counties have been nothing short of extraordinary – from the revival of MMT to the operationalization of the Youth Mental Health Treatment Program. These achievements stand as a testament to your collective efforts and commitment to our Mission.

Serving as the Chairman of the North Central Health Care's Executive Committee and Board has been a privilege, and as we take a moment to look back, I am reminded of the progress we've made and the challenges we've overcome. It has been a transformative year since the appointment of Gary Olsen as our Executive Director, and the leadership team he has assembled has been instrumental in our success.

However, none of this would have been possible without the incredible dedication and professionalism displayed by each one of you. As I observe the remarkable transformation and commitment of all North Central Health Care Employees, I am genuinely thankful for the pivotal role you play in our organization's success.

The vision set forth by NCHC's Leadership team and the Executive Committee has not only been embraced but has been elevated to new heights by your collective efforts. As the construction phase draws to a close and the novelty of our upgraded facilities settles in, it is your ongoing commitment that remains front and center in delivering essential services to the citizens of the three counties.

I want to take this moment to express my deepest gratitude for your dedication. The success we have achieved is, without a doubt, a direct result of your hard work, passion, and commitment to excellence. Each day, you contribute significantly to the well-being of our community, and for that, I sincerely thank you.

Looking ahead, I am confident that with such a dedicated team, the future of North Central Health Care Center is bright, and together, we will continue to make a positive impact on the lives of those we serve.

Thank you for your continued dedication.

Warm regards,

Kurt Gibbs
Chairman, North Central Health Care Center Board of Directors

Blood Drive Sign Up!..... 2

United Way Workplace
Campaign Drawing
Winners 3

From the Employee Health
& Wellness Center 4

Employees on the Move.. 5

Cover Your Cough..... 6

Foodie Forecast 7-8

Hard Hat Update..... 9



**Sam Zoellner,
Community
Treatment**

Always answering my
questions and helping
me! :)

Shared By:
Brooke Lampe



Occurrence Reporting Hotline

x4488 or 715.848.4488



Only significant or sentinel events requiring immediate notification to this hotline.



NORTH CENTRAL HEALTH CARE BLOOD DRIVE

EVERY **DROP** COUNTS

MOUNT VIEW
FRIDAY, FEB. 2nd
11AM TO 3PM
COMMUNITY ROOM



PINE CREST
FRIDAY, FEB. 9th
11AM TO 3PM
THE CLASSROOM



PLEASE MAKE SURE TO BRING YOUR ID

**APPOINTMENTS ARE APPRECIATED,
SCAN THE QR OR CALL 800-280-4102**

THANK YOU FOR HELPING US SAVE LIVES!



EVERCON 24

MARCH 1-3, 2024
THE FUTURE OF GAMING!
EVERCON.ORG

CENTRAL WISCONSIN CONVENTION AND EXPO CENTER
1001 MARKEE ST, D
ROTHSCHILD, WI 54411



Mark Your Calendar for EVERCON 24!

Help support our local schools by attending this fun event for the whole family!

In past, Evercon has raised funds to support suicide prevention initiatives locally and at NCHC.

This year, Evercon is supporting Make-A-Wish Foundation!



Marathon County Employees Credit Union

7-Month CD Special

5.05% APY

\$1,500 Minimum. At the maturity date, CD will automatically renew to a 12-month CD at the then current interest rate and APY for that term and current balance as shown on the then current rate sheet.



Early withdrawal penalties may apply. Must be current member or meet membership eligibility requirements. Non-matured CDs with MCECU are ineligible. *Annual Percent Yield (APY) accurate as of 1/1/2024. Limited time offer. Subject to change without notice. Other restrictions may apply.



UKG NOTICE
Mobile App Updates You Need to Know

UKG performed an update to the UKG Pro Classic app. Upon logging in to the app, a message may appear indicating that a security update has been completed. To complete the required steps – you need to SIGN IN with the option of SSO Credentials. You should then get prompted for your

username and password. Remember this is your norcen.org email address and your password is always your network password. Remember moving forward to always use SSO Credentials bar when logging into the UKG app.

If you have any questions or issues, please contact the HelpDesk at x6710 or 715.261.6710.



We want MORE Awesome People like YOU on Our NCHC Team!

Be sure to SHARE our Career Posts on Social!





WORKPLACE GIVING CAMPAIGN WINNERS!

A heartfelt thank you to **EVERYONE** who participated in the 2023 United Way Workplace Giving Campaign! Together, we pledged nearly \$18,000 for crucial community programming that touches the lives of many of the patients, clients and residents we serve each day. Your generosity will make a tangible impact on countless lives in Marathon, Lincoln, and Langlade County. Your dedication to making a difference is **truly inspiring**, and North Central Health Care is deeply grateful for your commitment to helping others. It is this dedication to people that defines our organization and our incredible staff. Thank you for your invaluable contributions!

As a token of our appreciation, we are excited to announce the randomly selected Workplace Campaign donor winners. Any employee who donated to this campaign was automatically entered to win.

BASKET & PLT WINNERS



Holly Boehm
MOVIE BASKET WINNER

Gourmet Popcorn Kit & Maker, \$10 Amazon Movie Gift card



Amanda Schmidt
8 HOUR PLT WINNER!



Chuck Kerstell
WAFFLE BASKET WINNER

Gourmet Waffle Mixes, Syrup, Mini Waffle Maker & Tongs



Lisa Lafreniere
8 HOUR PLT WINNER!



Gina Colasacco
WINTER BASKET WINNER

Hot Cocoa, Mug, Candle, Fuzzy Socks & \$10 Bistro Bucks



LUNCH WINNERS!

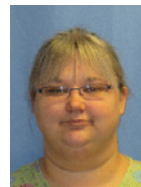
Grab a guest and join a senior leader for lunch. Their Treat!



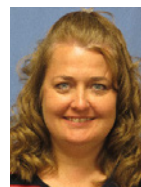
Wanda McCarthy
LUNCH FOR TWO with Gary Olsen ♂
Executive Director



Guy Bemowski
LUNCH FOR TWO with Vicki Tylka ♂
Managing Director of Community Programs



Keesha Campbell
LUNCH FOR TWO with Jennifer Peaslee ♂
Compliance Officer



Tammy Buchberger
LUNCH FOR TWO with Jason Hake ♂
Managing Director of Finance & Administration



WINNERS WILL BE NOTIFIED VIA EMAIL ON HOW TO COLLECT THEIR PRIZES



NCHC Employee Health & Wellness Center **Onsite Clinic**

Aspirus Employee Health & Wellness Center
1000 Lake View Drive, Suite 200
North Central Health Care Campus, Door 34
Wausau, WI 54403



Theresa Micke, PA-C
Physician Assistant

ANSWERS TO YOUR QUESTIONS ABOUT THE RSV VACCINE

What types of RSV vaccines are there?

There are two RSV vaccines licensed by the U.S. Food and Drug Administration for use in adults 60 and older in the United States:

- RSVPreF3 (Arevxy)
- RSVpreF (Abrysvo)

Both vaccines contain a part of the RSV virus. Both vaccines work by causing an immune response that can protect you from respiratory disease if you are infected with RSV in the future.

Who should talk to their healthcare provider about RSV vaccination?

Adults 60 years and older should talk with their health care provider about whether RSV vaccination is right for them. There is no maximum age for getting RSV vaccination. RSV vaccine is given as a single dose.

If you're 60 or older, your health care provider might recommend RSV vaccination for you, especially if you have a weakened immune system from illness (e.g., leukemia or HIV infection) or from medications (e.g., treatment for cancer or organ transplant), if you have chronic medical conditions such as heart or lung disease, or if you live in a nursing home. If any of those apply to you, you might be at higher risk of severe RSV disease and an RSV vaccine could help prevent serious illness.

Even if you had RSV infection in the past, RSV vaccination can help prevent future respiratory disease from RSV. There is no specific length of time that you need to wait after having RSV infection before you can receive an RSV vaccine, but generally, if you have a moderate or severe illness, you should wait until you recover before receiving an RSV vaccine. If you have a minor illness, such as a cold, you can get an RSV vaccine.

Who should not get RSV vaccination?

You should not get the RSV vaccine Arevxy if you've ever had a severe allergic reaction to any component of Arevxy. Information about Arevxy can be found in the manufacturer's package insert.

You should not get the RSV vaccine Abrysvo if you've ever had a severe allergic reaction to any component of Abrysvo. Information about Abrysvo can be found in the manufacturer's package insert.

How well do these vaccines work?

One dose of RSV vaccine provides protection against RSV disease in adults ages 60 years and older for at least two winter seasons, when RSV normally circulates.

In adults ages 60 years and older with healthy immune systems, one dose of the RSV vaccine Arevxy was 83% effective in preventing lung infections (like pneumonia) due to RSV during the first RSV season after vaccination. During the second RSV season after vaccination, one dose of Arevxy was still 56% effective against lung infections.

In adults ages 60 years and older with healthy immune systems, one dose of the RSV vaccine Abrysvo was 89% effective in preventing lung infections (like pneumonia) due to RSV during the first RSV season after vaccination. Based on early results from the second RSV season in a large study of how well the vaccine works, Abrysvo continues to provide protection, but the second season is ongoing and final results have not yet been released.

What are the possible side effects?

Side effects such as pain, redness, and swelling where the shot is given, fatigue, fever, headache, nausea, diarrhea, and muscle or joint pain are possible after RSV vaccination. These side effects

are usually mild. Patients who have experienced these symptoms when getting other vaccines might be more likely to experience them after RSV vaccination.

A small number of participants in clinical trials developed serious neurologic conditions, including Guillain-Barré syndrome (GBS), after RSV vaccination. GBS is a rare condition in which your immune system attacks your nerves, causing symptoms such as weakness. However, given the small number, it is unclear whether the vaccine caused these events, or whether they occurred due to chance.

If you experience side effects from RSV vaccination, you should report them to the Vaccine Adverse Event Reporting System (VAERS). Your health care provider might file this report, or you can do it yourself through the VAERS website, or by calling 1-800-822-7967.

If you have any questions about side effects from RSV vaccination, talk with your health care provider.

When should I get an RSV vaccine?

For the 2023-24 RSV season, if you are 60 years or older and your health care provider recommends RSV vaccination for you, you should get an RSV vaccine as soon as it is available in your community, before the number of cases of RSV start to increase, which is usually in the fall and winter. Early vaccination will ensure you are protected by the time RSV begins to circulate in your community. During the 2021-22 and 2022-23 RSV seasons, the number of cases began increasing as early as July in parts of the United States, so it may be difficult to predict when it will start in 2023. promptly.

Clinic Hours

Monday, Wednesday and Friday
8:00 am - 4:30 pm

Tuesday
6:30 am - 3:00 pm

Thursday
9:30 am - 6:00 pm



**Schedule your appointment by calling
715.843.1256**



employees on the move

Congratulations to these employees for their recent transfer or promotion!



congrats!

Savana Radtke transferred from Weekend Warrior LPN to Weekend Warrior RN at Pine Crest reporting to Bette Lloyd effective 1/7/2024.



Please join us for our *Open House*

Monday
February 26th, 2024
9:00 am-2:00 pm
Or
Tuesday
February 27th, 2024
2:00 pm-7:00 pm

820 S. 8th Ave
Wausau Wisconsin 54401

Think you can't afford to own a home?
THINK AGAIN!



If you can answer YES to all of these questions...

Family Partner Criteria



Do you need improved housing?



Does your income fall within the ranges of the chart on the right?



Are you willing to work with volunteers to build your home?

Family Size	Gross Annual Income
1	\$32,450 - \$38,940
2	\$37,100 - \$44,520
3	\$41,750 - \$50,100
4	\$46,350 - \$55,620
5	\$50,100 - \$60,120
6	\$53,800 - \$64,560
7	\$57,500 - \$69,000
8	\$61,200 - \$73,440

Register to attend an informational session to learn more about becoming a Habitat partner family!

February 7th, 2024
@ 10:00am

Location:
Habitat for Humanity of Wausau
1810 Schofield Ave.
Weston, WI 54476

Interpreters:
Arabic, Turkish, Spanish

February 13th, 2024
@ 6:00pm

Location:
Habitat for Humanity of Wausau
1810 Schofield Ave.
Weston, WI 54476

Interpreters:
Arabic, Turkish, Hmong

Ways to Register:
www.habitatwausau.org
(715)343-4243
kdrysdale@habitatwausau.org

February 17th, 2024
@ 10:00am

Location:
Marathon County Library/Wausau
300 1st St.
Wausau, WI 54403

Interpreters:
Arabic, Turkish

Approved low-income applicants can purchase a Habitat home, with a zero-interest home mortgage and payments over 30 years. Eligible income limits are between \$32,450 - \$73,440 based on family size.



**WAUSAU CAMPUS
LOST & FOUND**
Missing Something -
Come Take a Look!

Lost & Found is located at the Guest Services Desk near the Bistro at Door #5. Recently some more valuable items have been turned in that people are probably looking for. Watches, phones, key fobs, wallets, clothing, and a lot more. If you know of someone who has misplaced something, whether it be an employee or visitor, please point them in the direction of the Lost & Found at Guest Services.

**APPLICATION PERIOD:
CLOSES MARCH 22, 2024**



COVER YOUR COUGH

Help stop the spread of germs that can make you and others sick



Cover your mouth and nose with a tissue when you cough or sneeze. Put your used tissue in the waste basket.

You can also consider wearing a high-quality, well-fitting face mask which may help reduce the spread of respiratory germs.



Wash hands often with soap and warm water for 20 seconds, especially after touching tissues with secretions after coughing or sneezing. If soap and water are not available, use an alcohol-based hand rub.

CS336297-A

#FIGHT FLU



U.S. Department of Health and Human Services
Centers for Disease Control and Prevention



WHAT'S FOR LUNCH?

WAUSAU CAMPUS EMPLOYEE CAFETERIA
OPEN TO ALL NCHC & WAUSAU CAMPUS



BREAKFAST HOURS

8:30 AM – 10:30 AM

LUNCH HOURS MONDAY – FRIDAY

10:30 AM – 1:30 PM
HOT FOOD BAR
\$.45/OUNCE
(Weekdays Only)

GRAB-N-GO HOURS MONDAY – FRIDAY

8:30 AM – 5:30 PM

WEEKENDS:
GRAB-N-GO ONLY

THE SANDWICH & SALAD BAR IS BACK!

Make your own cold sandwich with lunch meat & fixins' OR self-serve at the salad bar. Salads are charged by weight.

JANUARY 29 - FEBRUARY 2, 2024

	MONDAY	TUESDAY	WEDS	THURSDAY	FRIDAY
MAIN	Cheesy Meatloaf Baked Potato Wax Beans	Vegetable Beef Stew Biscuit Creamy Coleslaw	Turkey & Dumplings Mixed Veggies Dinner Roll	Roast Beef Mashed Potatoes with Gravy Parslied Carrots	Vegetable Lasagna Breadstick Broccoli Cuts
SOUP	Cream of Potato Soup	Texas Tomato Soup	TBD	Beef Noodle Soup	Ham & Bean Soup
DESSERT	Cherry Delight	Bread Pudding with Caramel Sauce	Cranberry Dessert	Cinnamon Baked Apples	Pumpkin Fluff

FEBRUARY 5 – 9, 2024

	MONDAY	TUESDAY	WEDS	THURSDAY	FRIDAY
MAIN	Twice Baked Chicken Breast Mashed Potatoes & Gravy Green Beans	Lasagna Salad Garlic Toast	Apple Butter Pork Loin Stuffing Roasted Butternut Squash	Roast Turkey Mashed Potatoes Corn	Baked Cod Herbed Rice Carrots Rye Bread
SOUP	Cheese Cauliflower Soup	Beef Barley Soup	Garden Vegetable Soup	TBD	TBD
DESSERT	Brownie Bottom Cheesecake	Chocolate Chip Cookie	Snickerdoodle Krispy Bar	Banana Strawberry Cup	Cranberry Crunch



Position Postings

Title: Behavioral Health Professional

Status: Full Time

Location: Wausau

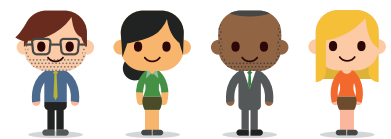
As a BHP, you will work collaboratively with our care teams to empower those we serve in their daily living skills. You will provide client and patient care duties and lead activities that cultivate stability, well-being, growth, skill development, and learning. Your work with NCHC's caring multidisciplinary treatment team is essential in creating a healing, trauma-informed environment supportive of recovery.

Learn More or Apply Online:

www.norcen.org/Careers



<https://bit.ly/NCHCBHP2>



We want MORE
Awesome People
like YOU on
Our NCHC Team!

Be sure to SHARE our
Career Posts on Social!



THE BISTRO

NOW OPEN 7 DAYS A WEEK! | WEEKDAYS 7:30AM - 3PM | WEEKENDS: 9:30AM - 5PM

THE BISTRO WILL BE CLOSED ON WEEKENDS FROM 1-1:30PM TO ACCOMODATE STAFF BREAKS

*HOT FOOD IS AVAILABLE AT THE BISTRO DAILY UNTIL 2:30PM *



SPECIAL OF THE WEEK

TexMex Panini or Quesadilla

SEASONED BEEF | MOZZ | PEPPERS | ONIONS | CHIPOTLE AIOLI

LATTE OF THE WEEK



Almond Bark

Rich white chocolate and almond topped with steamed milk & espresso.

\$1 OFF LARGE LATTES EVERY MONDAY!

**Please note: All sales subject to Sales Tax.*

- build your own -
BREAKFAST SANDWICH

PICK YOUR STYLE

EGG + CHEESE 3.00

EGG, MEAT + CHEESE 4.00

PICK YOUR BREAD

CROISSANT

BAGEL

ENGLISH MUFFIN

PICK YOUR MEAT

HAM

SAUSAGE

BACON





HARD HAT UPDATE

WAUSAU CAMPUS: INTERIOR ACCESS LIMITED FROM NCHC TO THE SOUTH SIDE OF CAMPUS

Effective 1/18/24

Interior construction processes are beginning in the former NCHC Outpatient and Administration wings located at 1100 Lake View Drive. This construction will limit interior access from the North side of campus to the South side of campus.

If you are walking from NCHC Employee Cafeteria to Social Services, Health Dept., Employee Health & Wellness Center, and Lake View Conference Center, you may use only the hallways marked in RED on the map below. This will be the only route through the area until further notice. All other areas will require hard hat, safety glasses, and personal protective equipment.

The route will remain through the winter months and be completely shut down for construction on May 1st 2024. Access between north and south ends of Campus will require using outside sidewalks and entrances only.

North Central Health Care Wausau Campus

- SUITE A** 2400 Marshall Street, Suite A
 - A Outpatient/Community Treatment (Door 1)
 - B Pharmacy & Lab
 - C Administration
 - HR/HIM/IMS/Finance Offices (Floor 1)
 - D Learning & Development
 - E MVCC 2 North & 2 South (Floor 2)
- SUITE B** 2400 Marshall Street, Suite B
 - F Mount View Care Center Main Entrance (Door 5)
 - The Bistro, Gift Shop, Volunteer Services
 - G MVCC Administration Offices
 - H Physical Therapy Center
 - J Community Room
 - K Mount View Courtyard
- SUITE C** 2400 Marshall Street, Suite C
 - L Aquatic Therapy Center (Door 8)
- BUILDINGS D & F** 1150 Lake View Drive
 - M Crisis Center (Floor 1)
 - Lakeside Recovery (Floor 2)
 - N Adult Behavioral Health Hospital (Floor 1)
 - Adult Crisis Stabilization (Floor 2)
- P** Youth Crisis Stabilization 2370 Marshall Street
- R** Youth Behavioral Health Hospital 2380 Marshall Street
- S** Marathon County Health Department
- T** Employee Health & Wellness Center
- U** Social Services
- V** Marathon County Lake View Conference Center

- Ⓜ Purchasing/Loading Dock
- Ⓝ Cashier
- Ⓜ Employee Cafeteria/Canteen
- Ⓜ Transportation & Housekeeping Offices
- Ⓜ Fashion Boutique
- Ⓜ Bus Stop





EMPLOYEE Communication SURVEY



Complete by February 8, 2024

NCHC Employees – We want your feedback!

North Central Health Care is committed to **Continuous Improvement** and **Partnership**. We greatly appreciate your participation in this **brief 2-minute survey**. Your insights into communication at NCHC are essential and all responses are anonymous.

We are challenging our team for 100% participation! The survey results will be presented to all staff during the Spring Employee Updates.

3 Ways to take the Survey!

- 1 Click on the Survey Link sent to your NCHC Email
- 2 Go to any web browser and visit <https://bit.ly/NCHCCommSurvey2024>
- 3 Scan this QR code with your smart phone camera app.



Take the Survey Today!