



A Weekly Update
For The Employees of
North Central Health Care



PHOTO OF
THE WEEK

Sharing mental and behavioral
health resources at the Community
Disability Resource Fair at
Wausau West High School on
Saturday, February 24.

North Central Health Care

NEWS YOU CAN USE



WEEKLY CONNECTION WITH GARY OLSEN

On February 19, 2024, the Lincoln County Board voted to sell the Pine Crest Nursing home. This has been one of the possibilities that was presented last spring when the Ad Hoc Committee submitted their report to the County Board. I know it has been difficult for the staff at Pine Crest as they have navigated through uncertainty over the past year. I have been impressed with how the staff have modeled all our Core values of Dignity, Integrity, Accountability, Partnership, and Continuous Improvement throughout this process. They have also shown great Person-Centered Service for all the residents in the facility. During this last year, the facility earned a five-star ranking and we had one of the best financial years since NCHC took over operations. These great accomplishments were due to the committed staff at Pine Crest.

The purchase agreement has the new company, Care & Rehab, taking over operations on July 1, 2024. We will continue to run and operate Pine Crest, business as usual, until that date. I have been meeting with the employees in Merrill to keep them as updated as possible regarding the sale. The new owners were able to come to the facility and started to meet employees on February 21st. They even brought their therapy dog, Arthur, with them. The new owners are committed to continuing our Person-Centered focus and they have been very impressed with the facility and especially the staff.

I have set up a transition team that will begin meeting next week to aid in making the transition to the new owners as seamless as possible for our residents and the staff. I again want to thank all the staff for how professional you have been through this process, and thank you for your continued Person-Centered Service that you are all providing. I will be providing an update regarding this process during the Employee Update meetings in March.

Gary D. Olsen
Gary Olsen
Executive Director

- Meet Our New Employees 2
- Prevent the Spread of Illness..... 3
- UKG Mobile App News... 4
- Community Event Opportunities 5
- New Wausau Campus Menu! Includes new Soup, Sandwich and Entrée Menu! 7
- Bistro Specials 8

Person-Centered
Shout out

Jalessa Perez, Adult Behavioral Health Hospital

Jalessa was a big help to the unit over the weekend!

Shared By:
Brandi & Katie

Occurrence Reporting Hotline

x4488 or 715.848.4488



Only significant or sentinel events requiring immediate notification to this hotline.



WELCOME THESE *New Employees* TO THE TEAM!

These employees were welcomed at Orientation February 19, 2024!

Patient Access Services



Jerica Kosky –
Lead Coordinator of
Patient Access Services

Adult Crisis Stabilization



Jodi Meyer –
Behavioral Health
Professional I

Adult Behavioral Health Hospital



Isabel VanderWaal –
Behavioral Health
Professional I

Outpatient Services



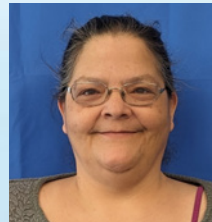
Amanda Baddmoccasin-Barnes
– In-training Therapist

Patient Financial Services



Theresa Larocque –
Patient Accounts Rep

Mount View Care Center



Tracey Shaw –
CNA

Health Information, Wausau



Winter Kostyn –
Office Clerk



Karen Thomas –
Health Information
Specialist I

Crisis Services



Jeremy Ratliff –
Crisis Professional I

Food Services Wausau



Rebecka Quaintance –
Dietary Aide

We are so excited to have you on our team!





Feeling sick?

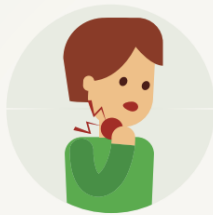
Stop the spread of illness in the workplace.
Stay home when you are sick.

Wash your hands frequently with soap & water
or use hand sanitizer when soap & water is not available.



Fever* or feeling feverish/chills

*It is important to note that not everyone with flu will have a fever.



Sore throat



Runny or stuffy nose



Cough



Muscle or body aches



Headaches



Fatigue (tiredness)

*Flu is different from a common cold.
Flu usually comes on suddenly, and in general symptoms are more intense compared to the common cold.*

If you think you may be sick, tell your supervisor or manager and **stay home from work.**



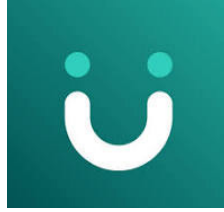
North Central Health Care

Person centered. Outcome focused.

Please, help STOP the spread of illness:

- Stay home if you are sick.
- Wash your hands frequently.
- Avoid touching your face.
- Cover your cough.
- Wipe frequently touched surfaces.

Contact your manager immediately if you are sick.



UKG PRO MOBILE APP INSTALLATION Mobile App User Must Take Action - Check Email for Complete Instructions

UKG is pleased to announce the new UKG mobile app called UKG Pro which replaces the legacy UKG Pro Classic app set to be retired in 2024. This updated app can be used to check your PLT, pay information, etc.

In your NCHC email are steps you will need to take by April 1, 2024, on your mobile device to install the new app. You must download and install the new UKG Pro app and uninstall the old UKG Pro Classic app in order to have access to your UKG account functions.

Effective 4/1/2024, NCHC/CCITC will only provide support for the new UKG Pro mobile app.

Use these QR codes here to help you quickly locate and download the new UKG Pro Mobile app from the Apple Store and Android Store, as labeled.

Apple Store:



Android Store:



NAMI Family-to-Family

National Alliance on Mental Illness

Begins April 4th!

NAMI Family-to-Family is a free, 8-session education program for family, friends and significant others of adults with mental health conditions. NAMI Family-to-Family provides information about anxiety, depressive disorders, schizophrenia, bipolar disorder and other mental health conditions. Other topics covered include communication, problem solving, treatment and recovery.

The course is designed to increase understanding and advocacy skills while helping participants maintain their own well-being. The program is taught by trained family members who have a loved one with a mental health condition. NAMI Family-to-Family is an evidence-based program (EB). For information on the research base for the program, visit nami.org/research.

NAMI offers the NAMI Family-to-Family Education Program free of charge to participants, beginning April 4, 2024. For more information and how to register, please contact NAMI Northwoods at 715-432-0180 or info@naminorthwoods.org.



Participant Perspectives

"This course overall was the single most, without a doubt, helpful and informative thing ever offered in all my years searching for answers...it has helped me to understand better and communicate more effectively with my brother."

"The course has helped me to realize that my son is still inside the body that is often times hidden by the mental illness and that I am not alone in this."

Contact us to register for a NAMI Family-to-Family class!



Register Today!!

About NAMI

NAMI, the National Alliance on Mental Illness, is the nation's largest grassroots mental health organization dedicated to building better lives for the millions of Americans affected by mental illness. NAMI Northwoods is an affiliate of NAMI Wisconsin. NAMI Northwoods and dedicated volunteer members and leaders work tirelessly to raise awareness and provide essential education, advocacy and support group programs for people in our community with mental health conditions and their loved ones.

EVERCON 24

MARCH 1-3, 2024

THE FUTURE OF GAMING!

EVERCON.ORG

CENTRAL WISCONSIN CONVENTION AND EXPO CENTER
10101 MARQUET ST. D
ROTHSCHILD, WI 54474

Mark Your Calendar for EVERCON 24!

Help support our local schools by attending this fun event for the whole family!

In past, Evercon has raised funds to support suicide prevention initiatives locally and at NCHC. This year, Evercon is supporting Make-A-Wish Foundation!



Marathon County
Employees Credit Union

Make More Possible with Our Spring VISA Balance Transfer Special!

Make More POSSIBLE
Imagine the possibilities with our low balance transfer rate!

3.99% APR FOR 9 MONTHS
When you transfer an existing balance to our credit union credit card between February 15, 2024 and May 15, 2024.

Ask us about this special rate offer today!

Balance transfers completed 2/15/2024 through 5/15/2024 will receive 3.99% APR for 9 months from date of transfer. After promotional time frame expires, remaining balances will migrate to the standard APR applicable on your account. Contact credit union for complete details. APR = Annual Percentage Rate. All loans are subject to MCECU's normal credit requirements.

Apply Online @ www.mccu.org

Don't already have a MCECU Credit Card? Contact Us to Apply!

culoans@co.marathon.wi.us
715-261-7680
400 East Thomas Street
Wausau, WI 54403

Proudly Serving NCHC Employees and Their Family Members Since 1965.



LUNCH, LEARN, AND DO BEHAVIORAL HEALTH

**THURSDAY
MARCH 21**
12:00pm - 1:00pm
Great Dane Pub

We will kick off the year learning about behavioral health, a broad term that can refer to clinical mental health diagnoses, addiction issues, domestic violence, and sexual assault. Participants will better understand how United Way of Marathon County is addressing financial stability by working on behavioral health issues.

At this event you will hear from Dakota Kaiser, PhD. Dakota is the Integrated Services Director at Bridge Community Health Clinic, which provides health services to the underserved, underinsured, self-paid and insured population of Marathon County, including many behavioral health services. Dakota will address the types of behavioral health issues that are facing patients in Marathon County, and how Bridge Clinic's role is critical to helping people achieve financial stability.

Following the presentation, you will participate in a brief project building calm kits for local schools. Calm kits include tools and information that help children with self-regulation strategies. Teachers and parents love these kits, and we plan to assemble around 200 of them to share with school counselors in Marathon County!

\$5 FEE INCLUDES LUNCH
LIMITED SPACE AVAILABLE
[REGISTER HERE](#)



CONTACT:
✉ CHANNEY@UNITEDWAYMC.ORG
☎ 715-298-5719



Managing Caregiver Stress

Providing care for a loved one can be rewarding but caregivers can also experience stress, guilt and frustration.

(Managing Caregiver Stress is adapted from the Powerful Tools for Caregivers curriculum)



Join us for a 1 hour FREE workshop on Wednesday, March 13, 2024 to learn new ways to manage your stress. Registration is required.

[This is not intended for professional caregivers]

Antigo, Marshfield, and Wausau Merrill and Wisconsin Rapids
in-person sessions from in-person sessions from
10:00-11:00 am 2:00-3:00 pm

****Virtual options will be available at both 10am and 2pm****



888-486-9545
WWW.ADRC-CW.ORG

Other Upcoming Community Volunteering & Community Event Opportunities

Seasonal Closet Transition Volunteering March 25-29

Help us prepare the Community Closet for spring, by replacing older clothing racks, packing up winter clothing, and hanging up fresh spring items for Community Closet guests. Grab a friend and sign up to participate: [Register Here](#)

Mobile Closet Volunteers Needed April 11

Our first Mobile Closet outing to Abbotsford was so successful, we are going back again on April 11th! We need helpers for 2 different shifts - to unload the truck and set up the shopping area, and then again to pack everything up on the truck when we are finished. No experience necessary, just a desire to have a really meaningful volunteer experience! Get a team together and [Sign Up Here](#)

Power of the Purse June 6

Women United's signature event, Power of the Purse, is back on June 6th for what we hope is another record-setting year! This event features fabulous packages for both silent and live auction, including designer purses, spa experiences, vacation packages in more! Early bird registration closes on April 30, so grab your tickets now: [Sign Up Here](#)



February 2024 Organizational Learning Modules



Each month staff are assigned 30-60 minutes of organizational training that needs to be completed by the due date.

Trainings Have Been Assigned

Log in to *UKG Pro Learning* and complete the following courses:

- NCHC Policies, Procedures, and Related Forms 2024 (10 minutes)
- NCHC Work Expectations, HR Policy Review, and Job Acknowledgment 2024 (70 minutes)
- Employee Compensation and Timekeeping Policy Review (15 minutes)
- NCHC Charge and Conviction Notifications, Background Checks – 2024 (10 minutes)
- Complete any outstanding assignments



Collection Boxes will be at MVCC Main Entrance and the Wausau Campus Employee Entrance Door #55

Donate here or local Festival Foods & Walgreens

Help for the Homeless HYGIENE DRIVE™

Feb. 11 -
Mar. 3

Help ease the financial strain on homeless and crisis programs in your community.

Most Needed Items

- | | | |
|-------------------|-------------------|-------------------|
| Bathroom Tissue | Diapers/Baby Care | Laundry Detergent |
| Cleaning Supplies | Face/Bath Soap | Paper Towels |
| Dental Care | Feminine Care | Razors |
| Deodorant | Hair Care | Trash Bags |

Donations remain in the community where collected!



Thanks to our sponsors and event partners!
Details at thefamily.net or 800-236-9364

Scrub Sale!

Mount View
March 12
1:30-3:30pm

Pine Crest
March 13
1:30-3:30pm

Payroll Deduction - Cash - Credit Card

2-Piece
Scrub Sets
ONLY \$24.95



While supplies last. Scrub sets are sold as is and cannot be sold separately.

Sign-up to get email reminders and a coupon to use on our next visit!

Scan the code with your phone:



Can't scan the code above? Go to scrubsonwheels.com/remind-me and use the code below to sign up:

74HJB8

Long Sleeve Tees
NOW AVAILABLE




Phone: 866-727-8273

Fax: 574-970-0382

www.scrubsonwheels.com



WHAT'S FOR LUNCH?

WAUSAU CAMPUS EMPLOYEE CAFETERIA
OPEN TO ALL NCHC & WAUSAU CAMPUS EMPLOYEES

BREAKFAST HOURS
8:30 AM – 10:30 AM

LUNCH HOURS
MONDAY – FRIDAY
10:30 AM – 1:30 PM
HOT FOOD BAR &
SALADS \$.45/OUNCE
(Weekdays Only)

GRAB-N-GO HOURS
MONDAY – FRIDAY
8:30 AM – 5:30 PM
WEEKENDS:
GRAB-N-GO ONLY



The Hot Sandwich Menu is Back!

FEATURING DAILY SPECIALS LIKE GRILLED BEEF & CHEDDAR, CHEESEBURGERS, BBQ SANDWICHES, TUNA MELTS, PIZZA & MORE!!
Make your own cold or hot sandwich with fixins' OR self-serve at the salad bar.

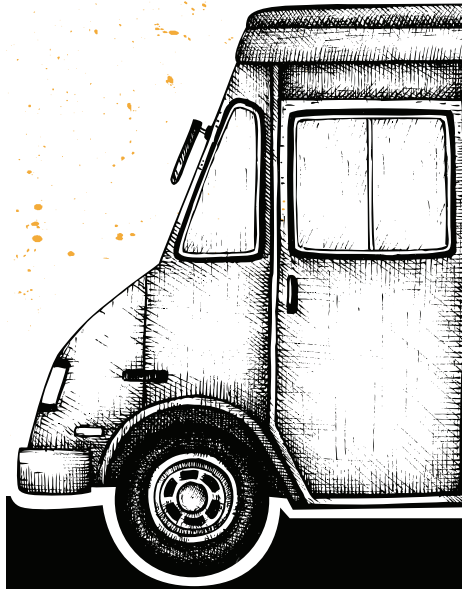
FEBRUARY 26 – MARCH 1, 2024

	MONDAY	TUESDAY	WEDS	THURSDAY	FRIDAY
MAIN ENTRÉE	Cheesy Meatloaf Baked Potato Wax Beans	Vegetable Beef Stew Biscuit Creamy Coleslaw	Turkey Dumplings Mixed Vegetables Dinner Roll	Roast Beef Mashed Potatoes & Gravy Parslied Carrots	Vegetable Lasagna Breadstick Broccoli Cuts
SOUP	Cream of Potato Soup	Hobo Soup	Cauliflower Soup	Beef Noodle Soup	Split Pea Soup
SANDWICH	Grilled Beef & Cheddar Sandwich	Breaded Chicken Tenders	Bacon Cheeseburger	BBQ on a Bun	Tuna Melt
DESSERT	Cherry Delight	Bread Pudding with Caramel Sauce	Cranberry Dessert	Cinnamon Baked Apples	Pumpkin Fluff

MARCH 4 – 8, 2024

	MONDAY	TUESDAY	WEDS	THURSDAY	FRIDAY
MAIN ENTRÉE	Twice Baked Chicken Breast Mashed Potatoes Green Beans	Lasagna Salad Garlic Toast	Apple Butter Pork Loin Stuffing Roasted Butternut Squash	Roast Turkey Mashed Potatoes & Gravy Corn	Baked Cod Herbed Rice Creamy Coleslaw Rye Bread
SOUP	Cheesy Cauliflower Soup	Beef Barley Soup	Garden Vegetable Soup	TBD	TBD
SANDWICH	Hamburger on a Bun	Taco Bar with Beef or Chicken	Meatball Sub	Homemade Pizza	Fish Tacos
DESSERT	Brownie Bottom Cheesecake	Chocolate Chip Cookie	Snickerdoodle Krispy Bar	Banana Strawberry Cup	Cranberry Crunch

Winter WAUSAU CAMPUS ~~SUMMER~~ FOOD TRUCKS



HANUMAN EXPRESS

**Wausau Campus
Tuesday, Feb. 27**

Mount View Care Center
LOT B Parking Lot

11 am – 1:30 pm

Hanuman Express wanted to celebrate the warm weather and have the food truck visit the Wausau Campus. Future stops will be communicated, if weather will continue to work out for us. Stay tuned to NYCU!

Please note: Food trucks are independently operated and may cancel with little notice. We apologize for any inconvenience.



THE BISTRO

NOW OPEN 7 DAYS A WEEK! | WEEKDAYS 7:30AM - 3PM | WEEKENDS: 9:30AM - 5PM

THE BISTRO WILL BE CLOSED ON WEEKENDS FROM 1-1:30PM TO ACCOMODATE STAFF BREAKS

*HOT FOOD IS AVAILABLE AT THE BISTRO DAILY UNTIL 2:30PM *



SPECIAL OF THE WEEK

Meatloaf Panini

MEATLOAF | CHEDDAR | BBQ/KETCHUP SAUCE | ONION

LATTE OF THE WEEK



White Cloud

Raspberry & white chocolate paired with steamed milk & espresso.

\$1 OFF LARGE LATTES EVERY MONDAY!

**Please note: All sales subject to Sales Tax.*

- build your own - BREAKFAST SANDWICH

PICK YOUR STYLE

EGG + CHEESE 3.00

EGG, MEAT + CHEESE 4.00

PICK YOUR BREAD

CROISSANT

BAGEL

ENGLISH MUFFIN

PICK YOUR MEAT

HAM

SAUSAGE

BACON

